

tradex news

Tel: 0121 550 4593
www.tradexnews.co.uk
April/May 2019 • Issue 701



X-Ray for production monitoring

Explorer™ One enables you to quickly understand the solder quality of your products by delivering the clearest X-Ray images. Market leading image quality makes it quick and easy to locate and qualify potential defects and make pass/fail judgements fast.

The imaging chain in the Explorer™ One draws on the Quadra series of tubes with their matched flat panel detectors and supplies, all designed and manufactured at Nordson Dage. This gives 2 micron resolution with, thanks to this imaging chain,

a brightness and clarity expected of much larger systems.

The Explorer™ One is ground-breaking in other ways too. There is no lead used in the shielding of this system, which helps to protect the environment and greatly reduces the system weight. Of course, there is no compromise on safety and the system is fully compliant with world-wide standards.

To get further details, please visit our website at: www.cupio.co.uk or give us a call on 01962 832654.

TC Facilities Management (TCFM) achieves £3M in new sales

TC Facilities Management (TCFM) has secured multiple new customers for the delivery of Cleaning & Window Cleaning Services in the Wholesale, High Street & Commercial Office sectors across the UK.



The contracts, worth £3 million per annum, will see over 300 colleagues join TCFM up and down the country since the contracts started going live from 1st March 2019.

The Operations team from TCFM, jointly led by Jason Smith, Head of Operations for Scotland and Cosmin Tecuta, TCFM Contract Director (pictured above), will deliver cleaning services to over 100 sites for 14 new customers.

The contracts have been awarded based on TCFM's proven track record spanning over 55 years, along with their ability to listen to the bespoke needs of each customer towards delivering what is really needed.

As one of the UK's top cleaning services providers, the new operating environments will benefit from TCFM's rigorous systems and state-of-the-art technology to help maintain and improve standards in each site along with delivering robust monitoring and management reporting to each customer.

Keith French, Business Development & Strategy Director, TCFM, who led the contract win said, "We are delighted to have been awarded these contracts and are looking forward to bringing our proven expertise to each and every customer along with playing our part in making each site a great place to work & visit."

T +44 (0)1737 814016
info@tcfm.co.uk
www.tcfm.co.uk

datamark uk www.datamarkuk.com

Datamark UK - Specialist Label and Label Solution Providers!
Here to help you deliver

datamark uk
"Self adhesive labels & labelling"

Datamark UK are a manufacturer and supplier of a wide range of labels and labelling solutions to a variety of customers from various industries. Datamark UK offer a broad range of knowledge and experience in dealing with your label and label solution requirements. The Datamark UK range of products we offer varies greatly as you will see in the links below. The products range from plain and printed labels to thermal transfer ribbons and printers to name a few.

Call us on +44(0) 1482 506560 | 505101 to discuss your requirements or for further information visit our website: www.datamarkuk.com

elmatic LARGEST MANUFACTURERS OF INDUSTRIAL HEATING ELEMENTS IN THE UK

Leading the Way

- Mica Heaters • Nozzle Heaters • Cartridge Heaters
- Ceramic Knuckle Heaters • Thermocouples
- Immersion Heaters • Tubular Heaters
- Square Section Heater • Air Duct Heaters

Tel: 029 2077 8727 • Fax: 029 2079 2297
Email: sales@elematic.co.uk
www.elematic.co.uk

Meet the expert

Paul Uglow (pictured) has worked in International Logistics for over 30 years in a number of roles including sales and operations manager, and is currently at one of the UK's leading independent providers of logistics services, Meachers Global Logistics, based in Southampton.



"Currently my main effort is working with Meachers customers with preparation for the potential of a hard Brexit; part of that preparation is due to not knowing yet what the HMRC Customs clearance solution will be. I feel that the more advice and support we can give companies the better they can transition once announced.

"To help them with this in the easiest possible way, we have put together a shopping list of 'To Do's' for importers of exporters across the south coast. A full version of the list can be found at: www.meachersglobal.com but in summary."

- A. Documentation** – It will be essential to obtain the correct documentation including a VAT or EORI number, commodity numbers, identified overseas supplier, origin of goods and a license to import or export.
- B. Import/Export Procedure** – There appears to be 3 methods of processing cargo through customs at the moment:
1. Customs will just open the boarder and allow importers to pay duty and VAT along the lines of what was the 'Intrastat process'
 2. Proposed by HMRC most recently, Transitional Simplified Procedure, TSP. This is aimed at companies doing their own customs clearance, direct online with payment
 3. The implementation of the New Computerised Transit System 'NCTS' with import and export of cargo on the T1 Document

If you feel that your company needs some help with contingency plans to be developed or more information about how Brexit could affect your business, then please contact Paul Uglow on 023 8073 9999 or email: sales@meachersglobal.com

Huge range of roll cradles now held in UK



HenryAR, the European trading arm of US company Henry Molded Products, now offers large stocks of Stakker roll cradles in a range of more than 40 styles within the UK for immediate distribution throughout Europe.

The cradles provide producers, converters and distributors of rolls of fabrics, papers and films with a safe and economical system for horizontal stacking on pallets, saving on production, warehouse and distribution costs.

Custom moulded packaging in paper fibre is increasingly replacing less environmentally acceptable materials. Henry is able to mould large format, heavy duty, deeper sections and its products are recyclable. It has its own design studio, mould making shop, slurry development and production process under one roof.

T +44 (0)1572 490644
steve@alderneyrace.com
www.stakker.eu

Westgate provides storage segregation for Great Bear

Westgate was tasked with providing a partition that would deliver both temperature and odour control for Great Bear's warehouse storage facility in Deeside, North Wales. Having worked with Westgate on previous projects, Great Bear was confident Westgate had the experience to design, supply and install the required partition wall.



Flexiwall solutions consist of individual fire rated panels

that are then profiled to fit the shape of the building. Using the existing structure or additional fabricated steel work, Westgate suspends and tensions each panel to form a permanent but reconfigurable, relocatable or removable wall. A Flexiwall FP560 sil-cloth fabric was used for this project, which was an ideal solution as it has

an extra coating to stop odour permeating the fabric. Flexiwall materials also carry thermal properties that

enable enclosures to operate at different temperatures. Due to the unique v-overlap system between panels Flexiwall also offers an over 99% dust tight seal. Flexiwall installations are quick and clean when compared to more traditional solid partition wall options. They also require less machinery and space to install. This particular project had a tight schedule and installation took place within a 3 week slot to accommodate Great Bear's project plan.

T +44 (0)1785 242181
salesteam@westgateuk.co.uk
www.westgateuk.co.uk

Engineering & Manufacturing News

CURTISS - WRIGHT

Surface Technologies

www.cwst.co.uk

Increasing life and performance of critical components

Surface treatment or modification can improve and extend the operating life of components and structures, optimising performance to its maximum potential.

Range of Surface Treatments

Our wide range of surface finishing services and products include:

- Controlled Shot Peening
- Laser Peening
- Engineered Coatings, including:
 - Thermal Spray - HVOF (High Velocity Oxy Fuel), Plasma, Arc Wire and Flame Spray
 - Everlube® Dry Film Lubricants
 - PROCOAT 100™ Corrosion Protection
 - Parylene - ultra thin biocompatible conformal coating with moisture and barrier protection - USP Class V1, ISO 10993 tested and MAF 1176 on file with FDA
 - Organic and inorganic overlay and diffusion coatings suited to the gas turbine and aerospace industries
- Material Analytical Services



For more information and full worldwide contact details:
www.cwst.co.uk or contact 01635 279621

Tube tool rental from BSA Tube Runner

BSA Tube Runner, a leading UK manufacturer of high-quality tube and pipe working tools, announces the continued success of its specialised tool rental service.

A wide range of tools are available for hire to suit various aspects of tube & pipe installation and servicing in such areas as industrial boiler repair, heat exchanger re-tubing and pipework fabrication.

Tools are available for processes including:

- ◆ Pipe Prepping, Beveling & Weld Removal
- ◆ Tube Pulling & Extraction
- ◆ Tube Installation & Expanding

◆ Flange Facing & Grooving

With over 30 years' experience in the industry all hire equipment is backed by full technical support. With excellent customer service in mind, rates are highly competitive and rental periods are flexible with no minimum hire duration. Rental orders can be dispatched at short notice, usually the same day.

All equipment is thoroughly maintained and serviced. Prior to shipment each machine is carefully checked and tested to ensure reliability



once it arrives on-site.

Full details of BSA Tube Runner's full range of products and services can be found at: www.tuberunner.co.uk

T +44 (0)2380 366410
tuberunner@bsa-regal.co.uk

Experts in surface technology treatment



Curtiss-Wright Surface Technologies, a subsidiary of the Curtiss-Wright Corporation, boasts a global network with over 70 worldwide locations, providing material surface treatments, protective coatings, high tech processes and much more for the aerospace, automotive, oil & gas, subsea, medical, and power generation sectors. They increase the performance life of metal components by protecting them against premature failure using their high performance metal surface technology.

Offering customers a single point of contact and source solution for controlled metal surface treatments, Curtiss-Wright are specialists in metal surface treatment, and strive to improve and reduce turnaround times and costs for their clients. Indeed, their history dates back to 1929, when the Wright Brothers and Glen Curtiss founded the Curtiss-Wright Corporation. The Metal Improvement Company was established in 1946, which was then acquired by Curtiss-Wright in 1968. With nearly 90 years of history to draw upon, Curtiss-Wright Surface Technologies are unequivocal experts in their field.

Some of the practical applications and benefits of their services include controlled shot peening, which is excellent for reducing fatigue and stress corrosion cracking, shot peen forming for creating curvature in aircraft, laser peening, CASE Isotropic finishing, parylene conformal coatings and much more.

Among their lauded engineering coating services, Curtiss Wright also offer thermal spray coating. Their thermal spray and High Velocity Oxygen Fuel spray coatings can be seen in use throughout aerospace, automotive, oil and gas, and much more.



Essentially, thermal coatings offer a cost-effective and high performance alternative to hard chrome plating, providing a finish that protects metals from heat, wear, oxidation and corrosion. HVOF thermal spray coating has numerous advantages, including being able to be used with metals, alloys, ceramics and carbides. Not only that, but it also provides outstanding bond strength to withstand against extreme mechanical loads.

What's more, their solid Film Lubricant and Liquid Component Coatings provide long lasting lubrication, and protection against friction and galling within harsh operating environments.

If you would like to find out more about Curtiss Wright and their many specialisms, you can get in contact with the team using the details provided below. For more information and case studies on their services, be sure to head over to the website below.

T 01635 279621
www.cwst.co.uk

NEW FROM



Mega_Bridge adds flexible and fully featured internet protocol (IP) connectivity to the well-established **Mega_Link** family of Telemetry & Control units used to pass two-way instrumentation, measurement and control data between sensors, equipment and industrial plant.

● Telemetry & Control

- Point to Point
- Point to Multi-Point
- IoT Architecture

● Flexible Communications

- ETHERNET, Wi-Fi, 3G/4G
- 458/868 MHz licence exempt low power radio
- Dual communications

● Sensor & Data Interfaces

- Volt-Free Digital I/O
- 4 - 20 mA Analogue I/O
- RS232/RS485 Serial Modbus to PLC or SCADA
- Expansion modules for additional I/O channels



Communications via Cloud Services

Mega_Bridge can communicate on a closed LAN or across networks and sites via Amazon Web Services, fully administered by Churchill Controls. This enables important security features using TLSv1.2 for authenticated and encrypted communications channels. VPN routing further secures the network, encrypting data with AES256 for a fully secured and transparent system for end users.

Contact us: 01344 750233
sales@churchill-controls.co.uk
www.churchill-controls.co.uk

Hainbuch workholding solutions

Pioneers, trendsetters, industry leaders; there are a great many ways to describe Hainbuch, the German born company which has truly gone global. One of its most recent developments, Hainbuch has introduced a whole host of technologies. With flexibility, minimal interference contour and precision levels all being key factors for the modern workholding solution, Hainbuch demonstrate these attributes in its new range of TOPlus and SPANNTOP mini chucks.

The new modular mini chucks are designed to boost compatibility and flexibility for customers. The workholding specialist has also developed the SPANNTOP mini chuck to make it compatible with an adapter ring in order to use the new modular system. The MANDO Adapt mandrel and corresponding



jaw module already works well with the new SPANNTOP mini, meaning complete autonomy for small component clamping needs. Unlike the SPANNTOP mini chuck, the configuration for the TOPlus system is a little different. Whereas the SPANNTOP uses an adaptor ring, the TOPlus system has a ring of attachment holes to secure the jaw module.

Hainbuch is also proud to announce its new MANDO Adapt series of adapters, designed perfectly so that it will also work in harmony with the TOPlus system.

T 01543 278731

The Insert Company (UK) Limited

Specialists in Threaded Inserts for Wood, Plastic and Metal

Unit 4, Alma Industrial Estate
Stafford Road, Wednesbury
WS10 8SX
United Kingdom

tel: +44 (0) 121 439 7329
fax: +44 (0) 121 439 7346
email: sales@theinsertcompany.com
web: www.theinsertcompany.com

UK's largest care focused event

Care Show, held at Birmingham's NEC from 9-10 October 2019, is the largest and busiest care event in the UK dedicated to bringing visitors new products, services, inspiration and innovation to support them in improving the lives of those in their care and assist them in running their care business.

By bringing together the key thought leaders and suppliers in the care sector, visitors had access to a comprehensive programme for 2 days of free content, giving them the tools and information they need to protect the future of their organisation.

Attending the show was an informative couple of days and a rare opportunity to:

- ◆ Get FREE business advice from independent experts and thought leaders and discover new ways to provide better care
- ◆ Network and share experiences, compare notes and connect with over 3,800 people outside of your own organisation
- ◆ Make a budget go further with exclusive show deals and access thousands of the latest products and services from over 250+ leading healthcare suppliers



Care Show returns to Birmingham's NEC this year in September 2020. This is our pick of the best exhibitors from last year's show, listed here in alphabetical order: Attach A Tag, AWB Textiles, careassist, Fixxon, Harvest Healthcare, HowDidWeDo?, ORNAMIN, Renray Healthcare, Robot-Coupe, Shackletons & SoupedUp. Further details can be found on this page and the next.

Contact
www.careshow.co.uk

Renray Healthcare

Renray Healthcare has been producing high quality healthcare and medical furniture for over 50 years and is one of the UK's largest and leading suppliers to the healthcare sector.

Whether you require a full fit out of furniture for a new build project or replacement of damaged or worn products, we have the knowledge, skills and resources to fulfil your requirements.

We manufacture and assemble our products in our own purpose built factories in Cheshire and Europe to British Standards. Hence we are able to ensure your furniture is produced to the highest quality, working with you to plan and meet your projects time schedule and budget.

We understand you are purchasing furniture that is fit for purpose, stylish and will continue to perform well into the future, which is why we design and build our furniture with you in mind.

Why Renray?

- ◆ Full turnkey and project management solutions
- ◆ In-house soft furnishings & flooring department
- ◆ DBS checked drivers & weekly deliveries across the UK & Ireland



- ◆ Meet current British Standards & accredited by relevant industry bodies
- ◆ Express product range available with delivery available within 10 working days
- ◆ Delivery, room placement and removal of packaging all free of charge services for all orders

Contact
T 01606 593456
info@renrayhealthcare.com
www.renrayhealthcare.com



HowDidWeDo?

HowDidWeDo? is an innovative feedback system that focuses on improving customer service. HowDidWeDo? can help you deal with customer issues more efficiently, and even improve upon your score on public review sites such as Carehome.co.uk.

The system works as a first port of call for customer feedback by sending any feedback straight through to management. This way, any negative feedback can be acted on immediately, instead of you finding out about it later on a public review site. Customers can leave feedback at any time, from any device or computer, or even while they're



still on site using the free to download app!

- ◆ Any customer that wishes to leave feedback can do so in as little as 30 seconds, using the mobile app, or from a webpage

- ◆ Management is notified immediately, via email or an alert on their phone
- ◆ Management can then view all submission details on the dashboard and respond to feedback
- ◆ If the customer has raised an issue, management then have the opportunity to immediately resolve this
- ◆ If the customer has left particularly positive feedback, they are encouraged to write a positive review, on a review site of the business' choice

Contact
T 0121 285 5590
jesse.welch-baines@hdwd.co.uk
co.uk

careassist

Careassist is a care logging system which helps make a care home staff's job simpler and more efficient. The theory behind careassist is "spend less time taking notes and more time caring". As a software company, our philosophy is that anyone should be able to use our programs without any training or manual, otherwise what is the point? With that in mind, careassist has been developed alongside a care home. They helped ensure all functionality was relevant and complied with CQC requirements.

Careassist takes the time that has been wasted by writing up the care given to a resident and allows the care home to focus on the residents' personal care in more detail. With all data hosted



in the Cloud the information is readily available and easily accessible.

Some other features in care assist include:

- ◆ Creating and editing care plans

- ◆ Tracking and logging training, such as infection control and Basic Fire Safety
- ◆ Taking photos and videos – with access from any device
- ◆ Family sharing – this allows families to see the care and activities the resident has been up to
- ◆ Log medical information – such as blood pressure, temperature and weight

Careassist is very proud to be recognised as a must-see exhibitor at the care show 2018. Careassist will also be at the Care Show in October 2019 at the NEC Birmingham!

Contact
T 02476 010100
hello@careassist.cloud
www.careassist.cloud

Elemental equipment for TMF preparation

Robot-Coupe has been manufacturing high-quality food preparation equipment for over 50 years, providing solutions for various professional needs in restaurants, institutions and catering. After creating their first signature food processor, they have since developed an exceptional range of devices to help prepare food of the highest standard.

Indeed, Robot-Coupe's equipment has been elemental in the preparation of texture-modified food (TMF) in care homes. In fact, without Robot-Coupe technology, TMF might not even exist in these establishments. TMF is essential in catering for residents with dysphagia, and allows the kitchen to prepare a range of dishes which are healthy, nutritionally balanced, and can be adapted to dietary needs. Robot-Coupe helps chefs to blend the food to the right consistency, so it can then be formed into TMF dishes such as burgers, pizzas, sandwiches, pies and desserts. Robot-Coupe is a staple in such environments, and is just one of the ways in which their equipment can transform professional food preparation.



For more information on Robot-Coupe's full range of products, head to their website or use the contact details below. A free demo is available on request.

Contact
T 020 8232 1800
www.robot-coupe.com



AWB Textiles

AWB Textiles is a family business that has served the UK's healthcare uniform needs for over 70 years. We have scrub suit type uniforms, nurses' tunics and a wide range of workwear from top brands such as Dickies, Cherokee and 1st Choice – all at value for money prices to suit most budgets.

The Dickies brand offers tough, hard wearing garments in a wide variety of colours in durable 175gsm poly/cotton that can stand up to commercial laundering while keeping its shape and colour. The X-treme Stretch garments from the US are produced in a new type of soft made fabric that stretches 4 ways, allowing maximum comfort for the wearer while also benefiting from its stylish and flattering fit.

The Cherokee brand offers comfortable lightweight scrubs in a huge range of colours to complement any décor or corporate image, while the tough no nonsense 1st Choice brand provides basic uniforms at a very low price.

We also have an in house embroidery service that can enhance any garment with a corporate logo or staff member's name and job title to give your business that smart professional look.

Visit us on Stand D552 and see how we can help you keep your uniform costs under control.

Contact
T 01288 353281
info@awbtextiles.co.uk



Clothes labelling made easy

Attach A Tag provides Care Homes of all sizes with a simple laundry solution which addresses the misallocation, loss and apparent stresses of managing Care Home laundry.

By having a clearly identifiable name tag fixed discreetly to a clothing item, the care team can quickly identify the owner of a garment – saving them both time and money.

The tag uses a unique twist action guaranteeing a secure fix. The materials used also ensure outstanding durability which will not show signs of wear from industrial wash cycles. Tags can be marked with room numbers as well as names, and are completely reusable. The whole system can be deployed with little cost when taking advantage of the schemes available.

Attach A Tag will be exhibiting at the Health Plus Care show in June, and again at the Care Show in October where you can see these innovative products.



Alternatively, sample packs and a friendly team can be contacted using the details below.

T 0333 220 6644
info@attachatag.com
www.attachatag.com



Smart design brings everyone to the table

Eating together is an important social event and one of life's simple daily pleasures – provided everyone can participate and enjoy their food. The award-winning tableware by ORNAMIN has been designed with style as well as function, removing any stigma or embarrassment about using adaptive crockery because its supportive features are discreetly hidden in its design.

ORNAMIN devotes its thinking and acting to the megatrend demographic change: As the society gets older, customers are looking for products that simplify their daily lives. At the same time, they set a high value on design, quality and sustainability. These factors are all taken into consideration during the product development process as well as the feedback of OTs, nurses and customers. Additionally, great materials make the tableware extremely light and very sturdy while wall thickness and brilliant surfaces give it a top-quality appearance making it also suitable for public catering, camping and children.

ORNAMIN Ltd belongs to the ORNAMIN family as



the sister company of the Ornamin-Kunststoffwerke GmbH & Co KG which is located in Germany. The UK-based ORNAMIN Ltd distributes the tableware which has been designed and manufactured in the ORNAMIN headquarters in Germany since 1955.

T +44 (0)121 667 6279
team@ornamin.co.uk
www.ornamin.co.uk



Smart technology is saving social care organisations up to 19% on catering costs

SoupedUp Catering software is rapidly changing the most labour intensive and costly parts of running a care home business.

Imagine a commercial kitchen where the chef has access to per portion recipe costs, recipe yields and scale up information at the touch of a button. With the SoupedUp Catering Software this can be your reality. Soupedup provides a smarter way to manage costs & can save you 19% on catering while at the same time boosting care and quality.

Digitising menu planning streamlines administration & Soupedup's Cloud-based platform allows for the instant sharing of this information across catering, care & clinical teams. Staff have access to resident dietary requirements & preferences right at their fingertips with both computer & tablet compatibility.

With new IDDSI standards set to launch in April,



SoupedUp's latest online training platform offers a convenient and cost-effective way to train care home staff in best practice and industry specific catering topics, without ever leaving the kitchen!

To learn more about our complete range of care catering solutions, come see us at Stand D682 at the Dementia, Care and Nursing Home Expo, or visit: www.soupedup.com

Harvest Healthcare

Harvest Healthcare is a leading manufacturer and supplier of high quality active and static mattresses, cushions and profiling beds, as well as moving and handling equipment, all designed specifically for use in care homes. Our products provide supreme comfort and dramatically reduce the incidence of pressure ulcers. We also offer full servicing packages to ensure reliability, regulatory compliance, and to reduce long-term costs.

We work in long-term, trust-based partnerships with customers to add real value to their businesses, solve their problems and help make their lives a little easier. We are adaptable and flexible to meet the needs of care homes UK wide, with extensive experience of supporting some of the UK's largest care groups.

All our products and services are designed to achieve our 3 key principles – enhancing resident care & safety, ensuring CQC & LOLER regulatory



compliance, and reducing long-term care home costs.

The friendly staff of Harvest Healthcare are easy to work with and will go the extra mile to show we are 'Equipped to Care' for you.

T 01709 377172
sales@harvesthealthcare.co.uk

New case study now online: Anchor Millfield Residential Care Home, Oldham

Following the completion of the 'Alisio' Bistro at Anchor Millfield Residential Care Home, Oldham, Shackletons was invited to sit down with Home Administrator, Anne Marie Widdowson, for a coffee and a slice of cake to chat about the furniture supplied by them and take some great photos.

Anne Marie wanted to maximise the space in the dining area and create a destination for residents.

"Many of our residents are unable to leave the home, so creating destinations like our



bistro allows them to feel like they're out and about. We've

worked with Shackletons for many years. We love the quality of the furniture. Charlotte was fantastic in helping us select fabrics and wood finishes that complement the environment. She was great at finding printed fabrics that looked great and came in on budget. The overall service was wonderful."

To read more and see the stunning photos, visit the Shackletons website for more details at: www.shackletonsltd.co.uk/latest-projects/health-care/anchor-millfield-residential-care-home-oldham

The perfect fixture for fixed-on bespoke buttons for clothing

Fixxon Ltd has created the perfect accessory to remedy the ongoing struggles of lost, misplaced clothing after being laundered. The South Wales company manufacture specifically designed buttons to target and lessen the struggle for homecare workers losing and not recognising items of their patients' clothing.

Fixxon's labelled button system, Fixxon Button, was made with the customer's comfort in mind. Unlike other button labels, Fixxon Buttons are designed as a slim line button, creating a comfortable wear for their customers.

Although originally made for use within home care industries,



these bespoke buttons are also compatible for labelling needs such as within schools, to clearly identify and retain clothing. The buttons also come in a variety of colours to keep laundry identifying clear and bold to the naked eye, they also can display wording

such as names and numbers.

Lasting far longer than the average button label, the buttons are maintainable accessories cutting down the cost of replacing labels. Notably, the buttons can withstand a multitude of temperatures and chemicals associated with everyday laundry. The Fixxon Buttons are made to be both comfortable and efficient, creating an easy recognisable feature for customers.

T 0800 096 4011
www.fixxonltd.co.uk



National Healthcare Expo Review Top 5

National Healthcare Expo has singular focus

The Expo, held at Milton Keynes' Arena MK on 28 November 2018, brought together regulatory officials, senior executives from public and private hospitals, healthcare managers, pharma executives, medical technology companies, GPs, dentists, mental health executives, researchers, medical professionals, department heads, etc, to create an innovative, efficient and sustainable healthcare industry through knowledge sharing and collaboration. The 100+speaker line up was drawn from senior management and experts from across the healthcare



industry that are pushing the boundaries in driving improvements and innovations in the

UK and global healthcare industry. As well as an action packed conference, over 60 exhibitors will be on hand to guide and inform our delegates about medical equipment, technology, medicines and services.

The National Healthcare Expo returns to Milton Keynes' Arena MK on 26 November 2019. This is our pick of the best exhibitors from last year's show, listed here in alphabetical order: Clearfleau. Further details can be found below.

www.healthcareevent.co.uk

Water management in the health and pharma sectors

Few working environments are as demanding and challenging as the healthcare, pharmaceutical and life sciences industries. They require the highest quality and performance at all levels, including access to advanced water purification and wastewater treatment technologies.

A more holistic approach to water and wastewater management can reduce overall effluent emissions with re-use of treated wastewater, minimising waste generation and disposal costs, and creating value from process residues that would previously have been discarded. This requires specialist, innovative technologies and the expertise to apply cost-effective on-site solutions.

As part of EnviroChemie GmbH, Clearfleau are experts in industrial water and wastewater technologies, providing our customers

with reliable and innovative solutions. We can access global expertise to develop customised processes to meet our customers' needs, delivered and supported locally by our UK team.

EnviroChemie, a leading German water engineering company, has over 30,000 water technology plants installed worldwide, from simple effluent treatment systems to Advanced Oxidation Processes for more complex requirements, such as API destruction.

Our Health and Pharma clients also benefit from continuous development by our in-house Research and Development team.

To use your water resources more efficiently, seek practical advice from our advanced water treatment specialists.



For more information, please contact:
Lester Young
M +44 (0)7939 687811
lester.young@clearfleau.com
www.clearfleau.com
www.envirochemie.com

For more information, please contact: Lester Young
07939 687811
lester.young@clearfleau.com
www.clearfleau.com

International Confex to move to ExCeL

In complete contrast to 2018, with glorious sun filling the exhibition halls at Olympia, Mash Media welcomed the largest gathering of UK event organisers (26-27 February 2019), across three stand out shows: International Confex, Event Production Show (EPS) & The PA Show.

International Confex welcomed just shy of 8,000 unique visitors. The Event Production Show offered inspiration to more than 6,000 delegates and The PA Show delivered an incredible training programme to more than 4,000 support professionals.

Liz Agostini, event director, International Confex, was thrilled with the overall results and feedback from customers. "Within five minutes of doors opening, meaningful conversations were taking place and deals were being instigated. The team at Mash Media were determined to deliver for our customers and put on a show that our industry could again be proud of. The feedback we have received has been overwhelmingly positive and has seen the highest level of rebooks we have experienced since we purchased the show in 2013. This puts us in a fantastic position as we start the exciting planning phase to take our events to ExCeL London in 2020."



International Confex, the Event Production Show and PA Show all proved a resounding success this year, providing industry experts and newcomers alike with all the ground-breaking ideas and unique exhibitors needed to deliver incredible events, and push the industry forward.

International Confex, The Event Production Show and The PA Show will take place on Tuesday 25 & Wednesday 26 February 2020 at ExCeL London. This is our first pick of the best exhibitors from this year's show, listed here in alphabetical order: DialogLoop, Digital Design + Media & Firebird Conference Systems. Further details can be found on this page.

www.international-confex.com

The future of live events

DDM has been supplying the events industry for many years, but fairly recently has focused solely on interactive and emerging technologies. DDM uses these to captivate an audience, interact, engage and explore brands and products. Currently our most popular service is in Virtual Reality. The technology is very versatile and clients can book one of our VR experiences to encourage visitors to an exhibition stand, as an example. The experiences are hosted, so there is no impact on client resources at the event and gives complete peace of mind, knowing the day will be a success and leave visitors with a lasting memory of the client's stand and of course, brand.

For a more bespoke solution, DDM can create customised interactive experiences that can showcase products in a unique way. Unlike the run of the mill 360 degree VR apps, our product allows the user to delve deeper into the brand experience. Focusing on items in a venue or virtual showroom triggers events like pop up graphics and video, animations and hot spots



that teleport the user to new areas to explore. Recent advances in the technology have lowered the build costs for these experiences to a price point that fits the events budget.

For free advice and quotes, contact us at: mail@digitaldesignandmedia.com or visit: www.DigitalDesignAndMedia.com or call 01202 802975.

From PowerPoint to phone in a click!

DialogLoop™, Inc. demonstrated its patent pending Audience Engagement technology for the first time at Confex 2019.

This PowerPoint AddIn can stream slides to the audience's mobile device at the Presenter's pace, share clickable content and build polls, surveys and word-clouds. In a single click in PowerPoint, DialogLoop™ creates a dedicated social-media-like website for your own event.

Delegates connect through an automatically generated URL and can see and download a PDF of the slides, even tweet their preferred too. Once connected to the session, they all see each other's social media profile, and may initiate direct private chat.

The dedicated event's website enables delegates to ask live written questions to the presenter, and everyone can add public comments to each question. If needed, questions can be filtered.

Conference and event organisers, presenters, managers, and any PowerPoint user can now build their event with



a deeper care for their attendees' opinion and make sure they are all fully engaged, using a very easy and powerful Audience Engagement solution.

DialogLoop™ is free to use for an event of up to ten delegates and can be downloaded at: <https://dialogloop.com>

For larger events, one-time or subscription plans are available online.

T +33 6 32 50 99 49
contact@dialogloop.com

#AbstractSpecialists

Wouldn't it be nice to talk to people who really love what they do? Even better, how about if they are regarded as the experts in the industry? Firebird is the specialist in the abstract submission and review process. In fact, most of Firebird's customers come looking for a better solution after finding their current supplier cannot meet their ever-growing needs.

We all know events are evolving and our services and software have always been one step ahead. It's great that other suppliers in the same industry are now recommending only Firebird to solve their customer's complex requirements. We use a mix of traditional and modern techniques to help our PCOs deliver the best possible event they can, but we want to do more!

Firebird is now leading the evolution of event management software, creating speaker management tools and introducing the industry to 'Triple Blind' reviewing!



No matter how simple or complex your submission and review process may be, Firebird is the team to talk to. Whether you need expert advice or ongoing support or a system you can run yourself autonomously, Firebird has exactly what you need!

Contact us for an online demo at: www.firebird.systems

Test, Measurement & Monitoring News

New interfaces available



New interfaces are now available for Sherborne Sensors LSOC and LSOP inclinometers including ±5V, ±10V, 0-10V and 4-10mA.

The LSO is a high precision gravity referenced servo inclinometer that can be used for a wide variety of industrial and military applications. Models are available in a variety of angular ranges each with low impedance output signals. Electrical terminations are via 6-way bayonet lock connector (LSOC) or solder pins (LSOP). It is extremely robust and will withstand shocks in excess of 1,500g. The design is well proven with many thousands in use throughout the world in the most demanding of applications.

T 0870 444 0728
www.sherbornesensors.com

Wireless Inclinometer System

PRECISE. RELIABLE. ROBUST.

Sherborne Sensors WTS Series

is an IP67 telemetry system designed to provide highly accurate angle measurements to 0.02°. Battery powered MEMS sensors transmit data via 2.4 GHz over 300 ft. range to handheld displays or PC interface with software.

SHERBORNESENSORS.COM

Sherborne Sensors

With ranges from +/- 5° to +/- 60°

CALL US:

01256 630 300

EMAIL US:

sales@sherbornesensors.com

Sherborne Sensors, a Nova Metrix company

NOVA METRIX

6

Sponsoring this issue of **Tradex News** is **Advantage Structural** on page 14

January Furniture Show 2019 delivers greater returns

Strong results were reported across all five halls of the UK's biggest furniture buying event during four busy days of trading at the NEC Birmingham from 20-23 January 2019. Exhibitors launched hundreds of new models and best-ever ranges and were rewarded with confident order levels at the UK furniture industry's biggest shop window.

This year's edition also saw the launch of the sleep-centric BED@JFS and LIGHT@JFS – a new, dedicated decorative lighting section in Hall 3, with both new initiatives proving to be extremely popular among buyers looking to enhance their offering. New sectors



contributed to a 5% increase in visitors compared with the 2018 event, while exhibitor feedback from furniture suppliers focused on the quality of buyers and orders committed on site.

In the other show areas – Premium Design, Living,

Dining & Bedroom and Interior Accessories – the high quality of the retail buyers throughout was constantly commented on, as was their eagerness to buy, given strong trading leading up to Christmas and into the New Year sales period.

January Furniture Show 2020 will run from Sunday 19th to Wednesday 22nd January. This is our pick of the best exhibitors from this year's show, listed here in alphabetical order: Creative-Cables, ECO Furniture Ltd, Hutig Furniture and Flooring, Richmond Interiors & Tetrad. Further details can be found on this page.

www.januaryfurnitureshow.com

Tetrad featuring Mulberry Home fabrics

Feed your passion for British design and craftsmanship with the launch of Tetrad's newest collection: Tetrad featuring Mulberry Home fabrics.

The British furniture manufacturer draws on 50 years' experience to develop shapes exuding timeless elegance with an effortless flair. The new collection's eclectic approach to modern furniture design sees an ingenious fusion of bohemian charm and country elegance, honouring Mulberry's spirit for individuality.

Created in 1991, Mulberry Home fabrics are exclusively designed in their London design studio & include many iconic and much-loved designs such as Flying Ducks, Morning Gallop, Dress Circle & Shetland Plaid. All of which have been consciously woven into the furniture collection by Tetrad's expert design team.

For more visual inspiration, we invite you to visit Tetrad's website at: www.tetrad.co.uk



Richmond Interiors

We look back on a successful trade show. The growth of recent years gave our customers confidence to expand with the new collections. We started installing complete studios this year, and we were able to place a few more during the fair. We hope for the same success next year. If you wish to visit our showroom in the Netherlands (30 minutes from Amsterdam) we will organise your whole trip.



For information or for a visit from our representative, please contact: sales@richmondinteriors.nl

Your light style: Component based products for customised lighting solutions

The success of the recent UK shows we've exhibited in has exceeded our expectations; we are grateful for every single contact, visitor and networking opportunity gained from the Birmingham January Furniture Show.

We are glad to discover that UK buyers not only love Creative-Cables' vast product assortment, but also understand our unique value proposition: a place to create virtually infinite and original lighting solutions that can be customised with no incurring costs.

It seems our customer service makes the difference, by delivering superior value; you appreciate our prompt responses to enquiries and satisfying the variety of requests. It seems like we stood out for a special creative touch in finding customised solutions while maximising the potential of our accessories and components range.

We are constantly working to improve, revise and increase our product menu: new lines are regularly released (decorative lightbulbs and patented design cables were our most recent introductions) in order



to make our offer even more complete, vibrant and beautiful.

We look forward to the future of our business in the UK!

For all enquiries, contact our B2B Manager at: luke.halpin@creative-cables.com

Hutig Furniture and Flooring: The evolution of veneer

Within the furniture industry there are many speculations and discussions going on about the advantages and disadvantages of using solid timber or veneer. There are many different opinions and preferences but nobody seems to know what's best overall.

So what if we combine the 2 ways of making furniture eliminating the disadvantages and using the advantages of both?

Hutig Furniture and Flooring does exactly that. Using state of the art sawing technologies we manufacture the veneer in thicknesses to suit the finished product's mechanical and durability requirements and also to achieve design features of grain pattern, etc, to suit the client/designer's vision.



Wet oak Veneer, cut from a fallen Scottish Oak

The ability to use heavy grain figuring means we create a unique product not possible in either commercial veneer or in solid timber. The veneer is then permanently bonded onto a high quality engineered solid timber core.

The result: a modern piece of high quality furniture with a handcrafted finish – sustainable and guaranteed to last.

For more information about the sustainability of Hutig Furniture and Flooring and about our products, please visit our website at: www.hutig.com and follow us on Facebook @hutigfurniture

ECO Furniture Ltd

The January Furniture Show is our main event of the year. It is here that we launch a lot of our new ranges for the coming year & 2019 was no different. We have introduced more ornaments to our already very popular selection. In addition, for the first time in 2019 we have brought in a bar-ware selection which proved very popular. Also, a first was our selection of premium sofas, marble dining tables and chairs.

It is also a good opportunity to see our customers face-to-face and get some feedback on how things have been throughout the year and what they hope to do in the year ahead. Furthermore, it was a good opportunity for us to launch our new merger with Uprise Furniture Ltd. We will be working on a joint venture from now on and will be including all their products in our portfolio going forward.

We are re-doing our showrooms in Wembley and giving our website at: www.ecofurnishings.co.uk a new look. Hence, all products will be visible online and available for viewing in person in our showrooms, you



are most welcome to visit MON-FRI 0900-1800. This year we will also be exhibiting at the Harrogate Home&Gift Fair.

T +44 (0)20 8904 0333
info@ecofurnishings.co.uk
www.ecofurnishings.co.uk



07818 205077
info@hutig.com
www.hutig.com

**THE MASTERS OF MODERN FURNITURE
INSPIRED BY THE RAW BEAUTY OF SUTHERLAND**



HIGH QUALITY SUSTAINABLE FURNITURE




Jasic launches two new PFC wide voltage inverters to the MMA inverter welding equipment range

New from global welding manufacturer Jasic are the Jasic Pro-Arc 180 PFC Wide Voltage and the Jasic 200 PFC Wide Voltage MMA welding inverters.

Both models use PFC technology to provide advantages such as energy saving and wide input voltage range (95-265V).

Both technologically advanced IGBT inverters, the models are extremely user friendly and offer reliable and consistent arc performance.

Both welding inverters also offer LIFT TIG functionality making them an ideal choice for maintenance and light fabrication use.

Each product carries a 5 year warranty offering the user total peace of mind.

Wilkinson Star is the exclusive importer and distributor of Jasic equipment in the UK and Eire. Wilkinson Star carries over 5,000 inverters in stock, available next working day. For further details, please contact your local Jasic stockist.

Wilkinson Star offers extensive training facilities at the Jasic Welding Academy offering 12 welding bays and qualified welding instructors. The product is also supported by the Jasic Service Hub which includes the Jasic Technology Centre where PC boards can be repaired to component level, the technical strong team of 14 supported by state of the art service workshops.

Contact
T 0161 793 8127
www.wilkinsonstar.com



VESA or universal mount for connecting monitors, displays or control panels

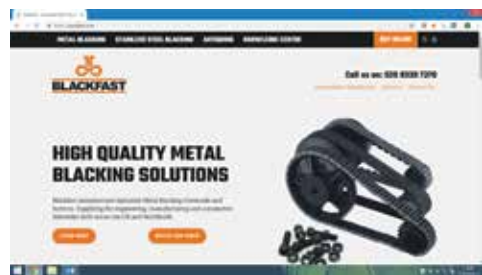


Monitors, touch screens, displays and control panels are used every day. Industrial machines and systems are programmed or performance data displayed on modern touch screens or control panels. On conveyors, monitors make it possible to monitor and visualise all sorts of processes. Today, control panels or flat screens are often an essential component of modern assembly workstations.

The RK monitor mounting is designed for monitors, control panels and touch screens up to 25kg and offers many degrees of freedom. The screen can be turned, tilted and swivelled and – if fixed to a round or square tube system – also height-adjusted. No tools required! All degrees of freedom can be adjusted separately via lever/handwheel bolts. With tilt-adjustment in 15° increments and vibration-proof locking.

T 01296 611660
www.rose-krieger.co.uk
www.phoenix-mecano.co.uk

New website



BLACKFAST CHEMICALS is proud to announce the launch of its new online store and website!

If you work in the engineering, tooling, automotive or manufacturing industries and regularly need to black small metal parts and components, thus enhancing both appearance as well as tested corrosion resistance, then BLACKFAST's chemical products are what you have been looking for.

Specifically designed for you to use in-house, proving to be easy, cost effective as well as safe to use, our products, knowledge and assistance are now just a click away.

For more information on our blacking processes and other chemical products, or should you wish to place an order or arrange an on-site demonstration, please visit our new exciting website at: www.blackfast.com

We, The Blackfast Experts, look forward to welcoming you there.

DOSE ACCURATELY, PROCESS INNOVATIVELY

PULSATION-FREE DOSING • SINGLE & MULTIFLUID • BLENDING & MIXING • FOR LAB, PILOT & PRODUCTION

suurmond

dosing systems for the production of high quality polymers and chemicals

- EACH PROCESS ITS OWN SOLUTION
- FROM µL/HOUR
- CUSTOM DESIGN
- PLUG & PLAY CONTINUOUS PROCESS
- COMPONENTS & SKID CONSTRUCTION

suurmond
engineered solutions

CHEMUK2019
VISIT US AT BOOTH E8
FROM 1ST-2ND MAY 2019

SPRING & SUMMER SPECIALS **HNPIM** **GATHER**

SUURMOND.COM

• Plastic Cases • Bespoke Foam Inserts • Silk Screen Branding •
• Injection Moulding • Vacuum Forming •

Full tailoring service

Screen-print branding

since 1972

GARD Plasticases

Call +44 (0)1622 871887 or visit us at www.gardplasticases.com

SOURCEWAYS

PROFESSIONAL SOURCING AND OUTSOURCING SOLUTIONS

COMPETITIVE EUROPEAN MANUFACTURING

■ STEEL FABRICATION	■ MACHINE BUILDING
■ MACHINING	■ PRESSURE VESSELS
■ CASTING & FORGING	■ LPG TANKS
■ TOOL MAKING	■ Ex EQUIPMENT
■ PLASTIC MOULDING	■ LIGHTING PRODUCTS

WE FIND THE RIGHT SUPPLIER FOR YOU

AT NO UPFRONT COST

SOURCEWAYS Ltd office@sourceways.co.uk +44 7977 229 375



SUSTAINABILITY TODAY

Issue 411 April

Tel: 0121 550 7510

www.businessandindustrytoday.co.uk

energy | water | waste | recycling | sustainability

SAP 10: A small change that hints at big things for decarbonising Britain's heat

Kevin Stickney, managing director of Erda Energy, argues recent building assessment factor updates are an overdue (and incomplete) corrective, offering a glimpse of the UK's electrified future for heating

The Standard Assessment Procedure (SAP) 10 attracted little fanfare outside policy circles and the building and heating professionals when it was released back in July. Little wonder: it is a set of mainly dry assessment criteria for building design that aren't even legally binding until reflected in updated building regulations, which probably won't happen until 2019 or 2020.

But these assessment criteria – last adjusted in 2014 – have been a handbrake on the urgent need to decarbonise heat in the UK. As policy and fiscal stimulus have turbocharged the engine and investment in renewable electricity has laid out a smooth road, clean heat has been held back. With SAP 10 lifting the handbrake, this could be the start of a fundamental shift in how we decarbonise heat in this country.

We should certainly hope so: heating makes up 32% of our total emissions, far ahead of power (21%) and transport (24%).

SAP 10: Long Overdue

The SAP standards list a number of factors used in assessing the environmental performance of buildings. Though not yet legally binding, publishing them now gives the building sector forewarning on adjustments to factor into planning and design decision.

So how have the standards changed? The major talking point has been the carbon factor of grid electricity. Last updated in 2012 (though not effective until 2014), the

current SAP figures stipulate 0.519kgCO₂/kWh. This means that for every kWh of grid electricity used by the building, it is estimated to produce just over half a kilogram of CO₂. This compares to a carbon factor of 0.216kgCO₂/kWh for mains gas, meaning designers have been more likely to opt for gas-powered heating in new buildings to meet emissions targets.

However, in the six years since SAP 2012 was written, the UK's grid has made great strides in decarbonisation. We're used to reading headlines now about record renewable production and coal free days. To catch up, SAP 10 slashes the grid electricity carbon factor used to 0.233kgCO₂/kWh, compared to 0.210kgCO₂/kWh for gas. Suddenly, on paper, combined heat and power systems and standard gas boilers look much less attractive compared to electric heating systems, such as geo-exchange and ground or air source heat pumps (GSHPs, ASHPs).

Time to Accelerate?

This is a positive step. Once in use, the new figures will bring us much closer to reality. However, nothing is set in stone. Until the new standards are embedded in building regulations, anything can change. Bear in mind that, right now, electric heating such as geo-exchange is still assessed at 0.519kgCO₂/kWh while 2017's grid carbon intensity was estimated at 0.225kgCO₂/kWh.

However, there are some pretty hefty caveats. First, note that 2017's grid carbon intensity is already below that used in SAP 10. Then consider that the new factors won't



apply until something like 2020. If grid decarbonisation continues – as current BEIS forecasts indicate – that could mean the carbon factor is significantly outdated by the time it comes into force.

At the time of writing, you need to go back more than three years, to the 8th May 2015 at 10:15pm to find the last five minute period with an average grid power emission rate equal to or higher than 0.519kgCO₂/kWh.

In effect, this means SAP 2012 has been distorting the decisions of building designers for years; artificially skewing environmental assessments. SAP 10 catches us up to today's figures but threatens to do the same again by 2020 if left static.

Hopefully this won't be the case. The BEIS consultation response suggested it would look into updating the carbon factor based on a monthly method (though the target for new buildings wouldn't change monthly).

If so, that's a major design flaw solved. However, in effect it would only be to remove a longstanding artificial disparity, rather than offer particular support to low/zero-carbon heat.

Whole System Thinking

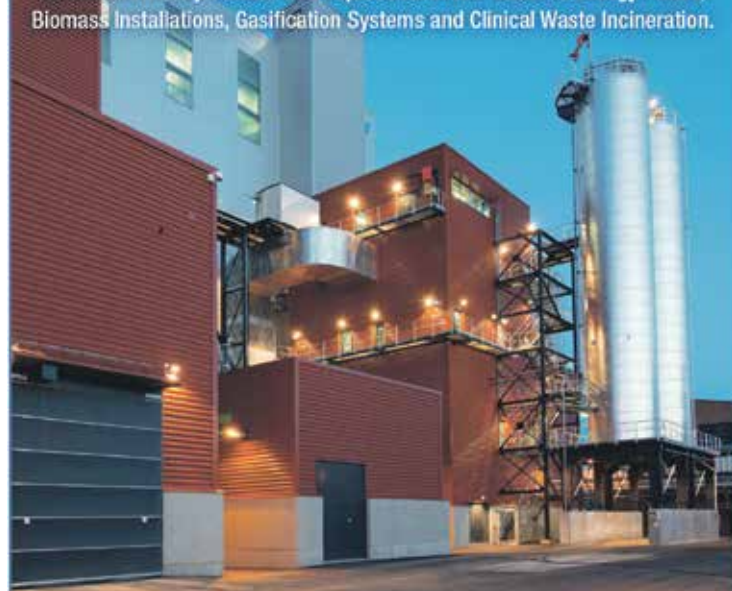
If an updated and upgraded SAP goes some way towards unshackling electric heat sources, there are other trends pushing that way too. Since the Conservatives dropped the zero-carbon homes policy, organisations such as the Green Buildings Council have tirelessly campaigned for it to be reinstated. Now Labour have adopted the policy, increasing the pressure. This matters. Zero-carbon is more stringent than low carbon, and all but precludes solutions based on CHP or the gas network (barring some big leaps of faith about hydrogen).

Recent research from the Energy Systems Catapult and Oxford University also questioned the fairness of the current balance between standing and unit rates for electricity supply. Current arrangements, they argue, favour users of on-site generation such as solar, as by offsetting grid use they pay proportionally less towards transmission and distribution costs despite still relying on the network. Conversely, users of low-carbon electric heat systems pay more than their fair share due to higher electricity usage, despite also making environmentally responsible decisions. They advocate for a rebalancing to remove this distorting influence on heat.

T 020 7236 0883
www.erdenergy.co.uk

Engineered for a Cleaner Environment

Total solutions for separation of airborne dusts and fume control. Dry sorption technology for the removal of acid gases such as SO₂ and HCl, dioxins and heavy metals. Vast experience within Waste to Energy Plants, Biomass Installations, Gasification Systems and Clinical Waste Incineration.



Lührfilter Ltd.

Air Pollution Control Technology

Unit 1 Crompton Court | Burntwood Business Park | Attwood Road
Burntwood | Staffordshire | WS7 3GG
Tel: 0121 353 0176 | Mail: info@luhrgb.co.uk | www.luhrgb.co.uk

MTK

BREAKER HIRE AND SALES LTD



DEDICATED SHEARS

Static & Rotational Shears to suit 8t - 30t



EXCAVATOR MOUNTED COMPACTORS

Hopac 500 for 1.5t-5t
Hopac 1000 for 5t-10t
Hopac 1600 for 10t-20t
Hopac 2300 for 20t+

MTK ARE ONE OF THE UK'S LEADING ATTACHMENTS COMPANIES.

FOR ALL YOUR HIRE & SALES ENQUIRIES PLEASE CONTACT US ON 0161-225-9740

VISIT OUR NEW WEBSITE
sales@mtk-breakers.co.uk
www.mtk-breakers.co.uk



HYDRAULIC BREAKERS

To fit Excavators 1.5t to 80t



SORTING GRABS

Demolition Sorting Grabs to suit 5t-50t



PILING HAMMERS

Dawson EMV Pile Hammers to suit 8t-30t



MOP PULVERIZER

Demarec Multi Quick Processors to suit 13t-60t

INDECO **KIRSHOFER** **AUGERTORQUE** **ITALMEK** **ALLIED** **Demarec**

MTK: New facility

MTK Breaker Hire & Sales, founded in 1999 and taking root in Manchester, has expanded its operation after recently opening a new branch near Cannock, Staffordshire to distribute Kinshofer's Crusher and Screening Buckets along with the NOX Tiltrotators. The new branch, which opened in October, had two chief points of focus: existing customers and sales enquiries for newly-introduced products. The new operation will increase area demand and support for hire, sales and repairs in the Midlands region.

The opening of the Midlands branch also means the company, which is a leading UK provider of hydraulic excavator-mounted attachments, now have two depots: one covering the North West and the other South Staffordshire and central Birmingham – with a five year expansion plan to open two further depots. As well as covering the Midlands the new depot allows quicker deliveries for spot hires, emergency breakdowns and greater coverage for southern England.

In 2019 MTK will be introducing Kinshofer's new product ranges which include screening and crushing buckets, with the new depot opening up in Cannock they can now provide quicker turnaround to customer demands. MTK also has its own fabrication workshop to repair & maintain customer products as well as its own hire fleet equipment. In addition, the company have just launched a brand-new website, where customers can view all their existing products and services.

T 0161 225 9740
www.mtk-breakers.co.uk



Water, wastewater and environmental monitoring

WWEM 2018, the 8th in the Series of International Water and Wastewater Monitoring events took place at The International Centre, Telford from 21-22 November 2018.

WWEM comprised a two day conference run with industry partners including SWIG (Sensors for Water Interest Group), and The Royal Society of Chemistry.

It's an exhibition of over 150 companies who provide instruments, equipment and services to monitor, test and analyse water and wastewater,



plus over 80 free technical seminar sessions on applications and case studies. Visitors to WWEM were able to source the latest products from laboratory analysis to process monitoring to testing out in the field as well as information on working in hazardous areas and gas detection.

In 2018 WWEM once again ran side by side with AQE 2020 (The 11th International Conference and Exhibition on Air Quality and Emissions Monitoring). Visitors to WWEM and AQE were able to enter both these complementary events free of charge and benefited from attending two industry

shows at one time under one roof showing a full range of products and services for environmental monitoring.

The biennial event returns to Telford's International Centre from 11-12 November 2020. This is our second pick of the best exhibitors from 2018's event, listed here in alphabetical order: Detectronic, Photonic Measurements, Pulsar Process Measurement, TCS Biosciences & Van Walt Ltd. Further details can be found below.

www.ilmexhibitions.com/wwem

Detectronic: Monitoring specialists with multiple solutions

As leading monitoring specialists, we manufacture, install and maintain a range of flow, level and water analysis instrumentation used across a wide range of sectors and applications.

We were proud to showcase our new MSFM MCERTS flow meter recently at WWEM. A battery powered AV flow meter providing guaranteed flow, velocity, depth and temperature measurement accuracy for sites which require MCERTS equipment, it is perfect for use in part-filled pipes and open-channels. Extremely versatile, the MSFM MCERTS can be located almost anywhere in the existing sewer channel or pipe and is suitable for wastewater applications including



Pass Forward Flow (PFF) monitoring and final effluent monitoring.

At Detectronic we provide full service solutions with a bespoke approach to every project. Our dedicated teams can provide flow surveys, asset performance investigations, flow and load surveys, flow meter hire, trade effluent monitoring, CSO monitoring, data screening and analysis, sewer monitoring and alarm management programmes.

Whatever your monitoring requirements, we have a cost-effective and highly accurate solution!

Contact
T 01282 449124
sales@detectronic.org
www.detectronic.org

Interchangeable technology transducers, a new velocity sensor and a WRC IUG award!

At WWEM, Pulsar demonstrated interchangeable RADAR and ultrasonic sensors. Both types perform initial signal processing within the transducer, while a common controller family provides control functionality. RADAR and ultrasonic are now completely interchangeable and retrofittable, so users can switch easily between RADAR and ultrasonic simply by replacing a transducer.

Also on show was Pulsar's recent development Microflow-i is a low power non-contacting microwave velocity measurement device that allows flow volumes to be calculated. Low unit cost means that measurement can be more widely deployed to give clarity of network flow profiles.

The WRC Instrument User Group presented two awards at the recent WWEM exhibition, one of which was won by Pulsar Process Measurement for Best After Sales Service. The award was introduced by IUG to recognise the instrument supplier that, through prompt after-sales support, goes the extra mile to ensure that their



technology meets the needs and expectations of the water companies.

Commenting on the award, IUG Chair, Dr Leo Carswell, said, "Pulsar stood out from the other suppliers, with the IUG members impressed with strong account management and willingness to meet regularly, resulting in speedy response and resolution to technical issues."

T +44 (0)1684 891371
info@pulsar-pm.com
www.pulsar-pm.com

The future is data – data delivered by Van Walt Ltd

Van Walt Ltd, the specialist supplier of environmental research equipment, recently launched their brand-new Data Collection Systems.

Developed in-house, the systems address the growing demand for accurate site data, cost-effectively retrieved. "A customer can save money by reducing time and resources spent visiting site," says Vincent van Walt, Owner, Van Walt Ltd. "Telemetry takes away the need to go to site as data is streamed directly to your desktop, tablet or mobile. You know immediately if there has been any interruption to collected data."

Telemetry is not new but Van Walt found there was no one fit solution that would 'talk' to a range of sensors and instruments. "Our customers often have deployed sensors and they want to retrospectively connect these instruments and perhaps add other monitoring equipment; different brands and/or different functions. Traditionally, this is when problems occur," says Vincent.

If you need to incorporate different monitoring elements like water level monitoring; water quality; soil moisture; flow gauging or switching instruments on/off; you need a system that talks several languages: Modbus; SD12; Pulse, Analog etc. A system that will output data via GPRS, satellite and radio, so data from difficult to access, remote locations becomes feasible with Van Walt's Data Collection options.



This powerful and flexible range of data loggers and telemetry is packed with features like multiple, simultaneous inputs and outputs; connection of up to 300 different environmental sensors to one data logger. A system that instructs, powers, interrogates and collects data from onsite sensors, organises it for distribution or sharing through on-board memory, industrial SD card, radio frequency, GPRS or satellite portals – is truly unique.

T 01428 661660
sales@vanwalt.com
www.vanwalt.com

TCS Biosciences, UK distributor for TECTA-PDS

TECTA-PDS is proud to offer the only US EPA approved automated microbial detection system for water quality monitoring. The Tecta solution fully automates the entire monitoring, interpretation and reporting process, helping to reduce manpower, eliminate human error and user bias, and shorten the overall time from sample-to-result. The Tecta method is capable of testing any sample from throughout the entire water cycle, from drinking water to bathing water to waste water (and even non-water matrices), without the need for dilutions. It offers laboratory-grade results but with the ease-of-use and portability that allows for on-site use if desired.

The solution is 'built for operators' and can be used as an on-site operational tool for micro testing, for compliance testing in the lab, or for any number of applications in between. The operator simply adds a sample to the test cartridge, places it in the instrument, and presses 'play' to initiate the test. Everything is fully automated from there, including results interpretation and immediate email notification of results. The Tecta system is available in both 4 and 16 chamber



instruments, together with test cartridges for specific parameters including E.coli, total coliforms, fecal coliforms, and enterococcus.

With Tecta's rapid, automated, & approved microbial detection system, users can run any micro sample, anywhere, any time.

T +44 (0)1296 714222
F +44 (0)1296 714806
sales@tcsgroup.co.uk
www.tcsbiosciences.co.uk

Photonic Measurements UV254 GO!

Photonic Measurements goes from strength to strength

Due to outstanding success at WWEM 2018, Photonic Measurements Ltd has attracted a range of new customers throughout the United States, Asia and Europe.

Photonic Measurements, supplier of UV254 measurement equipment, showcased its products including the UV254 GO! – a portable, hand-held analyser equipped with an icon-based interface that is easy to navigate.

The versatility of the Go! means it can be used in applications from drinking and waste water to industry and environmental monitoring. The Go! can collect multiple results simultaneously with the ability to store tens of thousands of data points. Graphs can be created on the analyser to visually represent the results. Data can be transferred via the USB port for review in Excel.

Photonic Measurements also provides a range of UV254 Probes, useful for continuous measurement of organic material in water, including surrogate measurement of COD, BOD, TOC & DOC. Effective management of organic load can be used to reduce harmful disinfection



by-products.

Photonic Measurements will be exhibiting at Aquatech in Amsterdam from the 5th-8th November. To learn more about Photonic Measurement, visit: www.photonicmeasurements.com or to discover more about our products, call +44 (0)28 9210 6263 or contact: sales@photonicmeasurements.com



simple
fast
portable

DOC
COD
SUVA
UV254
BOD
TOC



For more information about these portable units or our range of continuous measurement probes email us at sales@photonicmeasurements.com or give us a call +44 (0)28 9210 6263

The Air Quality and Emissions Show

With air quality experiencing extremely high levels of global political and media interest, and with Brexit looming at a time when the UK Government has suffered repeated losses in Court, the timing of AQE 2018 could not have been better. Debate is intensifying around the measures that must be taken to address air pollution, and monitoring has a key role to play.

The content of the AQE 2018 Conference was therefore developed in association with the STA (Source testing Association), EPUK (Environmental Protection UK), the REA (Renewable Energy Association), the CEA (Combustion Engineering Association) and IAPSC (Investigation of Air Pollution Standing Conference).

Held alongside the WWEM (Water Wastewater & Environmental Monitoring) event at Telford's International Centre from 21-22 November 2018, the exhibitions featured over 230 companies representing more than 400 manufacturers, and there were a total of over 140 free technical



workshops to choose from.

In addition to the updates on regulations that were provided by many of the conference speakers, each exhibition featured a 'Regulators Stand' providing help and advice from the regulators of England, Wales, Scotland, Northern and Southern Ireland.

AQE 2020, co-located again with WWEM, returns to Telford's International Centre in two years' time from 11-12 November 2020. This is our pick of the best exhibitors from last year's show, listed here in alphabetical order: Thermo Fisher Scientific & Vaisala. Further details can be found on this page.

Contact
www.ilmexhibitions.com/aqeshow

Power duo for air quality and weather measurements from Vaisala

Vaisala, a global leader in environmental and industrial measurements, offers a state-of-the-art air quality transmitter series AQT400 and weather transmitter series WXT530 that represent the cutting edge in compact atmospheric sensing. Ideally suited for small and large environmental sensing networks, both instruments provide up to six most essential air quality and weather monitoring parameters. The products are manufactured and calibrated at the Vaisala factory in Vantaa, Finland.

The instruments can be complemented with a wireless communication module for remote data connectivity, and a cloud platform for data access and management. The instruments are also fully compatible with Vaisala Observation Network Manager NM10 software for management of



large observation networks.

This versatile duo can be used in a wide range of applications including smart city networks, industrial air quality monitoring, hot spot and community monitoring, and decision support for traffic management. The data from the sensors is also well suited to support (hyper)local air quality modelling.

Contact
weathersales.uk@vaisala.com
www.vaisala.com/en/industries-innovation/air-quality-monitoring-and-prediction

Thermo Fisher Scientific

In over a decade of continuously monitoring mercury, passing hundreds of annual EPA certification tests and thousands of daily span checks, Thermo Fisher continues to innovate with the newest system for European regulations – the Watson Mercury Speciation System (MSS). The Thermo Scientific Watson MSS is a Continuous Emissions Monitoring System that offers high measurement sensitivity and robust operation in harsh environments. The system measures Total Mercury, HgT for compliance, as well as reports Mercury Speciation, as parts Hg0 and Hg2+, for process control and optimisation.

By utilising Cold Vapour Atomic Fluorescence (CVA), there is no interference from other stack gases, as proven by the large install base of over 600+ systems worldwide by Thermo Fisher. The Watson MSS provides power producers, waste incinerators, and cement manufacturers with a complete integrated solution for meeting tightening regulations. Thermo



Fisher has a dedicated team of application and service specialists to help you with the coming regulations and become compliant. Reach them, and learn more about the Watson MSS by following the link below.

Learn more on the website at:
www.thermofisher.com/eumercury

Water Management News

Transport fleet accreditation success boosts road safety

Lanes Group plc has passed five rigorous audits to retain national accreditation for transport fleet management and safe driving standards. The drainage specialist has achieved, through re-auditing, the Bronze accreditation for its UK transport fleet under the Fleet Operator Recognition Scheme (FORS). FORS is used by companies operating across the UK to benchmark standards in fleet management and safety.

Paul McParland, Health, Safety Quality and Environment Manager for Lanes Group, said, "Our FORS Bronze accreditation covers the management of hundreds of vehicles, many of them HGVs, and more than 600 drivers. Road transport is one of our biggest health and safety

risks, so we're delighted to confirm, through this FORS auditing process, that we are maintaining nationally-recognised standards, though there is no room for complacency."

During February 2019, five different independent assessors audited five Lanes depots – selected at random as part of the annual accreditation renewal process. All five achieved the required standard. All Lanes drivers covered by the scheme have also completed three online e-learning courses over the last 12 months – a new requirement, in line with moves to make FORS more rigorous year-on-year.

Robin Carrington, Lanes Southern Transport

Manager, said, "Lanes has held FORS Bronze accreditation since 2013. I have no doubt it has contributed to our determined efforts to continuously improve driving standards and transport compliance across the group."

During 2018, the Lanes HSQE team has worked with transport managers to use vehicle tracking data to encourage safe driving by teams based at 22 depots and its Severn Trent Water and Anglian Water utility hubs. This resulted in a 70% reduction in occasions where the tracking system recorded speeds exceeding road speed limits by 10% or more.

T 0800 525 488
www.lanesfordrains.co.uk



Figures recently published by CCWater show that the number of non-household complaints in the deregulated water market shows no sign of abating. While revealing a marginal improvement from the previous quarter, complaints received by the customer watchdog for Q3 were up by more than 20% from the same period last year. Of these more than 70% related to billing and charges.

Eddie Spencer, Head of Water Services for Schneider Electric, commented, "The introduction of competition and creation of specialist retailers were intended to improve metering, billing and customer services. However, approaching the market's second anniversary, some suppliers are simply being overwhelmed by queries and complaints. Billing errors are rife, communication lines between wholesalers and retailers wholly ineffective, and overall the expected customer experience advancements simply haven't materialised."

IMServ

Time to re-take control of your water costs

READ MORE

"CCWater's findings are only the tip of the iceberg, with their numbers dwarfed by the volume of grievances held up in the retailers' internal complaints processes. Ofwat's vision was for competition to represent the catalyst for widespread water efficiencies by the end user, but if retailers aren't even capable of raising an accurate bill, how can customers have any faith in their added value service proposition?"

"Having corrected millions of pounds worth of overcharging, Schneider Electric would strongly recommend that businesses check they are being billed correctly before considering service enhancements such as AMR and water efficiency schemes. Water management is the long-term vision, but for many organisations there are more pressing hurdles that first need to be overcome."

Eddie.Spencer@imserv.com

NEW FROM

CHURCHILL CONTROLS
www.churchill-controls.co.uk

Mega_Bridge adds flexible and fully featured internet protocol (IP) connectivity to the well-established **Mega_Link** family of Telemetry & Control units used to pass two-way instrumentation, measurement and control data between sensors, equipment and industrial plant.

- **Telemetry & Control**
 - Point to Point
 - Point to Multi-Point
 - IoT Architecture
- **Flexible Communications**
 - UHF License Free Radio
 - ETHERNET, Wi-Fi
 - 3G/4G mobile networks
- **Sensor & Data Interfaces**
 - Volt-Free Digital I/O
 - 4 - 20 mA Analogue I/O
 - RS232/RS485 Serial
- **Built-In Security VPN with AES256**
- **Use with ADSL modem for leased line replacement**



Communications via Cloud Services

Mega_Bridge can communicate on a closed LAN or across networks and sites via Amazon Web Services, fully administered by Churchill Controls. This enables important security features using TLSv1.2 for authenticated and encrypted communications channels.

Contact us: 01344 750233
sales@churchill-controls.co.uk
www.churchill-controls.co.uk

Transvac innovates with Carbon Dosing

Transvac's Carbon Dosing Solution 'TransPAC' has been successfully installed across many of the UK's water treatment sites to tackle taste, odour and pesticide issues. In several cases, the system has helped treatment sites avoid non-compliance and avert fines.



Powdered activated carbon (PAC) can be used to adsorb most pesticides, including metaldehyde, without the operational issues associated with GAC. Transvac's TransPAC system is a fully automated, containerised PAC dosing system that can be taken from site to site to treat water quality issues as they arise, often without the need to involve M&E contractors.

The system, which is custom-designed to meet specific site requirements, comes with bulk-bag and silo feed options as standard and also features a HMI control panel so that the PAC dosing system can be adjusted to match the works flow.

It has been designed for hassle-free and low-maintenance operation, its once-through inline dosing means there are no batch mixing tanks and lines are flushed clean on shut-down.

T +44 (0)1773 831100
sales@transvac.co.uk
www.transvac.co.uk

Lighting up new Scottish museum

Dundee's newly opened Victoria & Albert Museum hosts a selection of permanent Scottish design exhibitions and a temporary international programme of events dedicated to emerging design talents. The design essence intrinsic to the Scottish Design Galleries, which are accessible to the public free of charge, is based on the reconstruction of Charles Rennie Mackintosh's Ingram Street Tearoom.

The Scottish Design Galleries exhibit 300 items from the V&A collections as well as from private collections. To illuminate these areas, Arup, the M&E consultant, developed a solution that combines more than 600 of iGuzzini's Palco projectors with IN30 luminaires and Underscore linear lighting. All of the luminaires are DALI-controlled and the system allows management through Bluetooth, implicitly through smartphones, following the example of the installation developed by Arup for the royal Academy of Arts in London, which promotes the use of technology to achieve extreme simplicity and flexibility. Thus, the type of equipment and the straightforward management allow for different levels of integration between general lighting and accent lighting, according to the different exposure requirements.

iGuzzini's contribution also included the manufacturing of a series of double-dimming Palco projectors. The client's brief requested a device that was both directly dimmable during the commissioning phase, as well as subsequently manageable remotely, preferably via



mobile devices.

Designed by famous Japanese architect Kengo Kuma and set on the banks of River Tay, this extraordinary building looks like a ship about to sail into the Firth of Tay. However, from different perspectives, it brings to mind alternative imagery; sails, a shell, or the typical Scottish rock formations which were the original source of inspiration for Kuma's design.

Contact
T 01483 468000
www.iguzzini.com

Tridonic announces launch of companionSUITE

Tridonic is assisting luminaire manufacturers in the configuration, transmission and control of driver settings. companionSUITE is a dynamic set of various software tools developed by Tridonic for long-term process optimisation, minimising production errors and enabling simple analysis of faulty devices. The range of software has now been expanded to include an analysis tool.

LED drivers have a wide range of properties and functions, enabling lighting to be tailored to individual user requirements. Both the configuration of luminaires during the production process and the adaptation of settings for the respective application can involve the definition of numerous parameters.

The challenge here lies in the large number of settings to be configured. More often than not, this requires someone to pore over the datasheets. Tridonic companionSUITE takes on this intensive task and provides luminaire manufacturers with all the information they need on the relevant driver at a glance – from power functions such as the Constant Lumen Output (CLO) through to



application-related settings such as automatic control of luminous intensity via motion sensor using corridorFUNCTION. The customer is provided with a comprehensive on-screen overview of the properties and settings, can change these as required and can reprogram the devices via an interface.

T 01256 374300
enquiries.uk@tridonic.com
www.tridonic.com

Energy & Rural Business Show Review Top 10

Farmers flock to agri event seeking diversification advice

Thousands of farmers flocked to Energy and Rural Business Show, held at the Telford International Centre from 6-7 February 2019, to explore diversification options to keep their businesses viable, and 'future-proof' against rising uncertainty. The new event comes from the creators of 'Energy Now Expo' and for the first time showcased the latest renewable energy, farm diversification and low emission vehicle opportunities under one roof.

"We're responding to a time of great ambiguity and transition in agriculture and have introduced three elements of the show which are defining farms of the future. The Energy Now Expo, celebrating



ten years of success this year, was joined by Rural Business Expo and Low Emission Vehicles Expo," says event director, David Jacobmeyer.

According to the NFU Mutual 'Diversification report' issued in November 2018, the most popular diversification opportunities are renewable energy, which makes up 29% of activity, property letting, at 15%, closely followed by holiday

lets, glamping, etc, which makes up 12%. Other types of popular enterprises include livery stables, outdoor leisure activities and farm shops, all of which were heavily featured at the show.

The Energy and Rural Business Show will return in February 2020. This is our pick of the best exhibitors from this year's show, listed here in alphabetical order: ADBA, Berthold Technologies, Carbon Zero Consulting, Easy Crypto Hunter, Lycetts, Moorgate Agricultural Finance & NNFC. Further details can be found on this page and the next.

www.energyandruralbusiness.co.uk

Maximising and securing support with NNFC

NNFC, the Bioeconomy Consultant, offers support and guidance to project developers to ensure they are able to develop and deliver robust business plans. Support is provided from concept through to commercialisation. The team has a wealth of experience in development of policies, regulations and sustainability criteria in the energy and fuels sectors.

NNFC is available to secure financial support on behalf of developers and give investors confidence in financial models by undertaking independent degression analysis, for example. The team have a strong track record in this area; a client recently commented, "NNFC has been a lifeline for my project... without them involved we wouldn't be half the business we are today."

NNFC's Biogas and Biomethane Carbon Calculator is a bespoke tool to help AD plant managers remain compliant with sustainability criteria, allowing them to earn maximum possible support from schemes such as RHI, FIT and RO.



The Calculator covers the entire supply chain & enables operators to calculate GHG savings for heat, power and biomethane outputs simultaneously, for multiple feedstock consignments. The tool is Excel-based, uses industry standard units and has a user-friendly interface to make the process as simple as possible.

Direct support is available with NNFC also acting in an advisory capacity; guiding and troubleshooting projects which face regulatory challenges. This service is also proving popular in the biofuel industry, for which a separate tool has also been developed.

T +44 (0)1904 435182
enquiries@nnfcc.co.uk
www.nnfcc.co.uk

Farmers plug into new revenue opportunities

Faced with burgeoning economic pressures, farmers are increasingly turning to diversification to bolster their income streams and futureproof their businesses. According to the government's latest Farm Business Survey, 66% of farm businesses in England had some diversified activity in 2017/18. Of these diversified farms, 21% generated solar energy in 2017/18 and 10 per cent generated other sources of renewable energy. Those farms generating renewable energy (excluding solar power) generated 10% of their total income – £50 million of £440 million – from these activities. These stats attest to the fact that renewable energy can help improve economic viability of rural businesses – but gaps in knowledge and experience are to be expected. Specialist insurers or intermediaries can provide advice from a risk management perspective and help farmers divert from costly, and in some cases, business-critical liabilities. Lycetts has vast experience within the renewable energy sector and understands the complex insurance needs of this increasingly diverse market. From anaerobic digestion and hydroelectric schemes to wind, solar, Battery Storage and biomass projects, Lycetts can arrange comprehensive renewable energy insurance cover and provide bespoke, specialist advice on what cover is necessary, including contract works, delay in start-up, environmental liability, and machinery breakdown with resultant loss of revenue.

For more information on renewable energy insurance, contact Dorothy Pigg on 0191 232 1151 or email: dorothy.pigg@lycetts.co.uk

Lycetts
Insurance Brokers



Renewable energy
is a complex business.
Insuring it shouldn't be.

Lycetts truly understands the unique elements of running a business like yours. From anaerobic digestion and hydroelectric schemes to wind, solar and biomass projects, we'll ensure your plant is fully covered from construction through to being fully operational.

Lycetts
Insurance Brokers

0191 232 1151 dorothy.pigg@lycetts.co.uk
www.lycetts.co.uk

Lycetts is a trading name of Lycett, Browne-Swinburne & Douglass Limited which is authorised and regulated by the Financial Conduct Authority. Lycetts is a trading name of Lycetts Financial Services Limited which is authorised and regulated by the Financial Conduct Authority.

Proud to protect your business



UK AD AND WORLD BIOGAS EXPO 2019
CO-LOCATED WITH
THE WORLD BIOGAS SUMMIT

FREE-TO-ATTEND REGISTER NOW
3rd - 4th July 2019 NEC, Birmingham, UK
www.biogastradeshow.com

Events organised by
ADBA **WORLD BIOGAS ASSOCIATION**

The UK AD and World Biogas Expo 2019

Join us at the largest international trade show dedicated to anaerobic digestion and biogas.

The UK AD and World Biogas Expo 2019 offers a unique combination of industry insight, innovation and investment opportunities for both the UK and international markets.

Along with 200+ exhibitors, this year's event will feature five themed theatres:

- ▼ Circular Cities Theatre
- ▼ Future Farming Theatre
- ▼ Food Waste and Water Theatre
- ▼ Innovation Hub
- ▼ The Engine Room

Find out more about the programme & expert

speakers at: www.biogastradeshow.com

At this free-to-attend event, you will learn the latest in market news, including policy and regulations, as well as discover global trends, developments and success stories.

Register your free tickets today at: www.biogastradeshow.com

NEW in 2019!

Now co-located with the World Biogas Summit, the global thought leadership forum on anaerobic digestion and biogas.

Discussions with leading figures in sustainable development will centre around the industry's contribution to tackling climate



change and meeting the United Nations Sustainable Development Goals.

Register today for your free delegate ticket at: www.world-biogas-summit.com

Events are organised by the Anaerobic Digestion and Bioresources Association (ADBA) and World Biogas Association (WBA).

Moorgate Agricultural Finance

Moorgate Agricultural Finance is an industry specialist which understands the agricultural industry, its complexities and knows how to ease the burden of obtaining finance.

Our experts can fund anything from tractors, bailers and trailers, to livestock purchases, feed, fertiliser and they have recently secured pullet finance for landowners operating in the poultry industry. Our team also work heavily in all areas of the renewables sector, including funding for solar PV, biomass CHP and voltage optimisation.

Moorgate Agricultural is currently working on projects for the construction of biogas plants through using asset finance or secured funding. It has also had lots of experience



with anaerobic digesters which involves the process of turning bi-products into a methane gas. Many poultry farmers or those working within the pig sector are choosing to put their waste products and materials back into their own anaerobic digester system, which Moorgate Agricultural can help to fund.

Another product the team specialise in is renewable lighting. LED lighting systems for poultry houses is a very popular product which many farmers choose to take a finance option out on.

Moorgate has also worked with large companies and landed estates to help them fund wind turbines and help with the construction phase.

Our agricultural team ensure they tailor finance packages to suit every individual farmer's needs and understand the difference between breeding livestock, growing crops and planting bricks.

For more information, contact Josh Letten on 01908 926262 or email: j.letten@moorgatefinance.co.uk

There has never been a better time to install a ground source heat pump (GSHP)

With the ongoing reduction of carbon intensity of the UK's power supply, a GSHP is now more carbon efficient than a gas-fired boiler, providing 40% reduction in CO₂ equivalent emissions. The Renewable Heat Incentive (RHI) remains available for new registrations for 2 more years; a great financial opportunity, not to be missed.

In terms of longevity, GSHP systems also have the upper hand. The renewable 'fuel' source for a GSHP is the sun, via heat storage in the ground. The heat can be collected in many ways: from boreholes, water wells and surface water bodies such as rivers, lakes, canals or the sea. These 'collectors' are long-term assets with a life expectancy of over 100 years, much like gas, water and electricity infrastructure today.

GSHP systems can serve projects of any size.



Buildings, greenhouses and polytunnels might share a network of uninsulated pipes with fluid circulating at ambient temperature. This avoids the need for expensive insulated pipework in conventional high temperature district heat networks. A high degree of control is provided by using GSHPs in individual buildings for both heating and cooling.

Contact: John Findlay CEng, FGS, MCIWEM, Director, Carbon Zero Consulting Ltd
T 01572 729510
M 07976 263441
john@carbonzeroco.com
www.carbonzeroco.com

Berthold's MicroPolar online microwave analysers

The MicroPolar range of moisture analysers from Berthold Technologies is ideal for the moisture measurement of Biofuels. Based on Microwave Transmission technology, the MicroPolar has some technical features that are very important when measuring natural products like wood chips or pellets, sugar beet, straw bales and other bio fuels.

Due to the multi-frequency technology, the system ensures a very stable and reliable measurement, unaffected by reflexes or resonances of the measured product. An integrated reference line eliminates any environmental influences, making it ideal in industrial environments. However the unique advantage of the Berthold system is the possibility to compensate for varying loading heights or bulk densities. This ensures accurate



and representative results. A measurement you can rely on.

The real-time measurement results provided by an online moisture meter are most beneficial in terms of safety and production costs, especially the Berthold system that is unaffected by the colour of the product. From the different technologies available on the market, the Microwave Transmission has proven to be the most representative

and reliable technology. These analysers can be easily installed on existing conveyors and are not subject to frequent recalibrations or maintenance.

Contact: Graeme Webb
T +44 (0)1582 761477
graeme.webb@berthold.com
www.berthold.com

Independent Sustainable Water and Energy Solutions

- GSHC viability assessment and design
- Borehole and soil thermal conductivity testing
- Building heat loss assessment and M&E services
- Water resource development and management



carbonzero CONSULTING
Carbon Zero Consulting Ltd,
28 Gaoi Street, Oakham, Rutland LE15 6AQ
The Workbox, Wharf Road, Penzance TR18 4FG
www.carbonzeroco.com

T 07976 263441
john@carbonzeroco.com



Are you frustrated with...
Constrained farms wasting energy?
Inadequate battery storage solutions?
Incredibly low feed-in tariff rates?



Use generated energy to power GPU Cryptocurrency Mining Rigs

Our renewable energy customers received up to a 67% ROI (that's gop per/kWh) over a 6 month period in the bear market of 2018.

Utilise the heat generated by the mining rigs to heat your air volume.

Potentially claim your VAT back on each mining rig and account for it as a capital allowance.

A plug and play Cryptocurrency solution suitable for novices and experts alike.

07825 300800
www.easycryptohunter.co.uk
aliceeasycryptohunter@gmail.com



[Facebook](https://www.facebook.com/easycrypthunter)
[Instagram](https://www.instagram.com/easycrypthunter)
[YouTube](https://www.youtube.com/easycrypthunter)
[LinkedIn](https://www.linkedin.com/company/easycrypthunter)
[TikTok](https://www.tiktok.com/@easycrypthunter)
[Pinterest](https://www.pinterest.com/easycrypthunter)
[Reddit](https://www.reddit.com/user/easycrypthunter)
[Twitch](https://www.twitch.tv/easycrypthunter)
[YouTube](https://www.youtube.com/channel/UC...)
[Facebook](https://www.facebook.com/easycrypthunter)
[Instagram](https://www.instagram.com/easycrypthunter)
[YouTube](https://www.youtube.com/easycrypthunter)
[LinkedIn](https://www.linkedin.com/company/easycrypthunter)
[TikTok](https://www.tiktok.com/@easycrypthunter)
[Pinterest](https://www.pinterest.com/easycrypthunter)
[Reddit](https://www.reddit.com/user/easycrypthunter)
[Twitch](https://www.twitch.tv/easycrypthunter)

Earthborn's brand new colour card



Earthborn has launched its new classic colour card. Overstated colour is trending and with Earthborn's 7 new hues, each imbued with fresh, fluid energy, you can carry your space to a new, contemporary realm.

The new colours are:

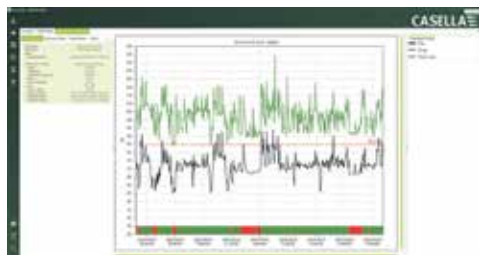
- ▼ **Bobble Hat** – With its roots firmly in nature, Bobble Hat is a majestic blue
- ▼ **Hippo Hooray** – An honest, well balanced grey
- ▼ **Hobgoblin** – An easy-going green with a subtle hint of blue
- ▼ **Delilah** – This delightfully flattering coral hue sits between orange and pink
- ▼ **Flutterby** – Nearly white but not quite, Flutterby is inherently versatile
- ▼ **Lady Bug** – A richly toned burgundy, both classy and considered
- ▼ **Tick-Tock** – A timeless shade offering warmth, freshness, light and shade

Earthborn has also renamed Claypaint 'White' to 'White Clay' to reflect its uniquely soft, creamy look, and made Eggshell No.17 available in 'White Clay' to match it.

The 7 new colours are added to the classic range of 72 colours, available in Claypaint, Lifestyle, Eco Chic & classic Eggshell finishes. Our high performing, breathable paints are naturally beautiful. No oils or acrylics mean no nasty emissions and high breathability. The Earthborn range of distinctive designer paints is available in a variety of colour palettes and a range of finishes, which are better for you, your home and the environment.

T 01928 734171
sales@earthbornpaints.co.uk
www.earthbornpaints.co.uk

Casella's NoiseSafe



Casella, air sampling, noise and vibration specialist, has launched an advanced and reliable software package for its personal dosimeter (the dBadge2), NoiseSafe. When used alongside Casella's dBadge2, it is the ideal tool for fast and efficient reporting and analysis of noise exposure levels. In the UK, over one million employees are exposed to levels of noise at work, which puts them at risk of noise induced hearing loss (NIHL). In fact, last year 23,000 workers in the UK reported work-related hearing problems, with workers in the manufacturing, food and construction sectors most at risk due to noisy working conditions.

Casella's NoiseSafe software saves the user time with its instantaneous reporting on an employee's noise exposure levels. Linked to the dBadge2, the software downloads a typical eight-hour workplace recording in just a few seconds. Audio and motion can be analysed to determine if any of the data is erroneous, which can be quickly and easily removed from exposure data, giving confidence in the results.

Casella's NoiseSafe software is available with any purchase of the dBadge2 from April 2019. Casella is dedicated to reducing occupational health and environmental risks and supporting businesses with their monitoring and analysis needs.

For more information about Casella's advanced NoiseSafe software, visit: www.casellasolutions.com or follow @CasellaHQ on Twitter or @Casella on LinkedIn.

Workplace recycling redesigned

Method is the maker of visible, flexible & beautiful recycling bins, found globally in spaces such as: world-renowned British architecture firm Foster + Partners, the Sydney Cricket Ground, Wellington Airport, the Design Council, Qantas, and many more.

Co-founders, Steven and India Korner, spent three years mastering Method's award-winning products and recyclable packaging – holding focus groups, preparing prototypes, and even assisting cleaners on night-shifts. All of this hard work paid off. Resulting in the colour-coded and ultimately behaviour-changing Method 60L Office Recycling Bins that connect together to form flexible recycling stations.

Method pioneered the philosophy of Open Plan Recycling, bringing recycling stations out into the

open plan design of modern spaces where they are most effective.

The Method system benefits every person in the waste process of a space. Cleaners save time servicing communal recycling stations rather than individual desk bins, management assert their sustainability goals visibly and effectively, and waste service providers will receive waste that has been accurately sorted at source. A patented Bag Retainer System holds liners in place and hides them from sight for a beautiful finish. This makes the bins easy and hygienic to service. Further, as employees separate their waste more effectively in the office, they are united by a common cause and recycle more at home.

Method value working with cleaners for an effective



outcome, believing they are key to the sustainability journey of a business – able to track the rates of success, monitor and report back on areas of improvement.

M +44 (0)7763 525668
hello@methodrecycling.com
www.methodrecycling.com

Waterless Wheel Cleaning



The DriveOn V-Tech Dry Wheel Cleaning System from EcoGreen Plant Hire Ltd

- No water to provide, waste or dispose of
- No water course contamination, or freezing or icing
- No power required and no emissions
- No ancillary equipment to hire – pumps, generators, bowsers, lances
- No supervision required, and no breakdowns
- Reduces reliance on road sweepers
- Up to 60% less surface area than other dry types

0800 1303437

www.ecogreenplanthire.co.uk
info@ecogreenplanthire.co.uk

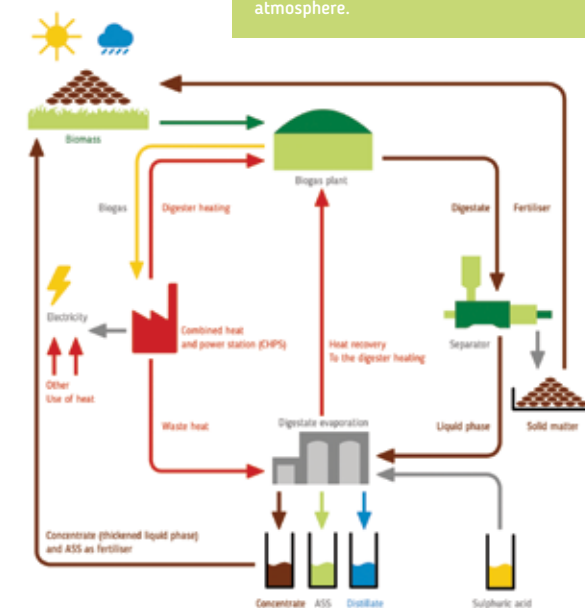
EcoGreen Plant Hire Ltd
Effective Waterless Wheel Cleaning



Vapogant Digestate Evaporator

Energy-efficient, novel digestate reduction with nitrogen recovery

The Vapogant Digestate Evaporator, processes digestate from biogas plants into a highly concentrated fertiliser (ASS). The residual digestate is thickened by removing water under vacuum, together with efficient utilisation of waste heat from the CHP's. This system is a completely closed circuit process, ensuring no emissions, dust or odours are released into the atmosphere.



For more information, visit:
www.biogastechnik-sued.de

ecospill®
Be spill prepared not ill prepared



HOW WELL PREPARED IS YOUR BUSINESS TO DEAL WITH A SPILLAGE?

The UK's no.1 manufacturer and supplier of spill prevention, and control products and services

CONTACT ECOSPILL TO ARRANGE A FREE ASSESSMENT OF YOUR SITE'S CURRENT PREPAREDNESS TO DEAL WITH A SPILL!

- ✓ Carried out by one of our experienced assessors.
- ✓ Identifies areas at risk from spillage including consequential impacts to people, the business and the environment.
- ✓ Assessment generates a written report detailing our observations and presenting practical cost effective recommendations where necessary.

WE CAN ALSO PROVIDE SPILL RESPONSE TRAINING FROM SIMPLE TOOLBOX TRAINING COURSES TO CERTIFICATED AND ACCREDITED TRAINING FOR FIRST RESPONDERS.

- ✓ Courses are carried out at your premises
- ✓ Delivered by experienced trainers
- ✓ All demonstration material included
- ✓ For a quote please contact us at sales@ecospill.org.uk

We only sell our products via approved distributors and resellers.
Contact us at sales@ecospill.org.uk to find your nearest stockist or to download our latest catalogue.

Kobus Services: Revolutionising excavations through innovation

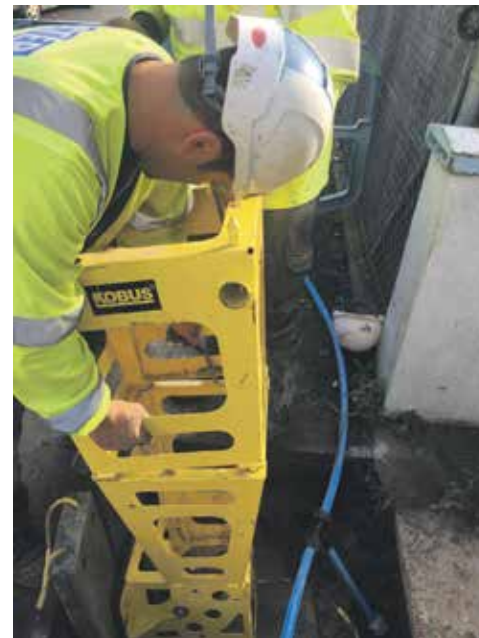
Sustainability Today is pleased to select Kobus Services as our Utility Services Company of the Month; ground-breaking and innovative, Kobus is set to revolutionise what can be a very costly and dangerous operation in the field of excavations and pipe replacement.

Excavating pipes used to supply utilities such as water or gas, either to replace or service them, is rather a problematic operation which poses a great many risks. Firstly, there are the costs involved – digging trenches to excavate utility service pipes is a costly endeavour – there are the high costs of labour due to the laborious nature of the job, and the costs of repairing roads or expensive driveways if the pipe in question runs under either of these is considerable. Pipes don't always run under easy to dig soil and earth. Digging up a pipe under a road involves costly equipment and takes time.



Secondly, and more importantly, excavating service pipes can be highly dangerous due to the occurrence of what is called 'utility strikes'. These strikes occur when a worker digs a trench in order to access pipes and accidentally strikes a pipe carrying gas or electricity. Striking one of these pipes can cause electric shocks and explosions and can result in serious injury and even fatalities. It is estimated that tens of thousands of these instances occur every year, thus rendering it a serious problem. Aside from the risk of injury and fatalities, there is the added cost of repairing this damage and the cost of the loss of utilities caused by the strikes.

Lastly, there is the obvious disruption caused to the surrounding environment and inhabitants by lengthy and messy excavations; traffic disruption, noise pollution and damage to property are all adverse effects of digging excavations to access service utility pipes.



This is where Kobus comes in; the Kobus Pipe Puller is an ingenious solution to the above mentioned problems. The Kobus Pipe Puller works by extracting the desired pipe whilst



pulling through the newly inserted pipe in the same operation. Rather than digging a trench the length of the pipe, the Kobus Pipe Puller requires only two small excavations on either side of the length of pipe to be replaced or removed. This makes the Pipe Puller an ideal solution for all pipe maintenance work, but especially so for that which requires roads or driveways to be dug up. Lengths of 20-25 metres can be removed, while lead, copper, galvanised steel, and PE can all be replaced using the Kobus Pipe Puller, up to diameters of 1-1/4". What's more, the entire process can take between just 1-2 hours.

Kobus supply basic machines, components, consumables, and accessories, offering a fully comprehensive service to the customer. With a second model in the pipeline, the future of Kobus is very exciting indeed.

Contact
T 01827 338855
info@kobusservices.com
www.kobuspipepuller.com

Classifieds

Air Pollution Control

ERG
Air Pollution Control
Supplier of industrial air pollution control systems to the international process industry.

- Flue gas scrubbing
- Desulphurisation
- Thermal oxidation
- VOC abatement
- Refurbishment projects and upgrades

01403 221 000 Info@ergapc.co.uk
www.ergapc.co.uk

Water Boreholes

DRAGON DRILLING
(Water & Energy) LTD
SPECIALISTS IN WATER BOREHOLES AND GROUND SOURCE HEATING

WATER BOREHOLES - NO MORE WATER BILLS!
GROUND SOURCE HEATING ...
LOWER FUEL BILLS ON HOT WATER AND HEATING

Transfer Systems

Process Combustion
COMBUSTION & HEAT TRANSFER SYSTEMS

- Waste to Energy Systems
- Thermal Oxidisers
- Control Systems
- Skid Systems – Pumps, Valves, Pipework

+44 (0)1423 879944
mail@process-combustion.co.uk
www.process-combustion.com

Energy Saving Solutions

Operational solve complex production problems, helping you to save energy, control costs and reduce your impact on the environment.

- Manufacturing Optimisation
- Heat Recovery
- Energy Reduction
- Environmental Impact Solutions
- Odour and VOC Abatement
- Service and Maintenance Contracts

OPERATIONAL
engineered around you
Website: www.operationalgroup.com
Email: uk@operational.net
Tel: 01928 579473

Water Management

Environmental Construction Solutions Limited
Specialists in Surface & Waste Water Management
Advice - Design - Manufacture - Supply - Installation
Commission - Service - Repair

www.ecs-sales.co.uk | 03456 123332

• Water Boreholes
• Earn cash via RHI payments with a Ground Source Heating System
• All Existing Boreholes Maintenance and Servicing
• Water Treatments

Visit our on-line shop

WE WILL BEAT ANY LIKE FOR LIKE WRITTEN QUOTATION*
* SEE WEBSITE FOR TERMS

For more information about our services, please call today 01824 707 777 or visit our website on: www.dragondrilling.co.uk

Electronic Repair

Leading equipment suppliers for air quality monitoring applications

- Ambient Air
- Industrial Processes
- Scientific and Research

ET enviro
technology services
www.et.co.uk
01453 733200 info@et.co.uk
World Leading Environmental Monitoring Systems

Finance

Cash neutral asset finance for your energy needs

For over 30 years AFM Solutions has been offering long and medium term finance for all your sustainable energy needs.

- LED Lighting & Controls
- Solar Photovoltaic
- Solar Thermal
- Voltage Optimisation
- Biomass Boilers
- Wind Turbines (small)
- Heat Pumps
- Building Management Systems

afm SOLUTIONS
FOR TECHNOLOGY FINANCE

Call or email Mike Baker on 01268 572587
mbaker@afmgroup-solutions.co.uk
www.afmgroup-solutions.co.uk

Environmental Leading Consultancy of the Month

Leading the way to an environmentally positive future

Sustainability Today is pleased to feature Way to Eco Ltd as our Environmental Leading Consultancy of the Month.

Way to Eco Ltd is an innovative environmental consultancy focusing on waste prevention with the ambition of encouraging/enhancing recycling and fostering the circular economy.

Way to Eco was established in 2017 by Donata Magrin. Originally from Italy, Donata is a geologist by training with more than 20 years of experience in waste management and remediation of contaminated sites. She is extremely passionate about environmental issues and founded Way to Eco after she experienced London's lack of efficient waste management/recycling initiative.

I spoke to Donata about how the business idea was formed. "Arriving in London," Donata explained, "I was surprised to see how in this great, cosmopolitan and technologically advanced city, the recycling process is convoluted and inefficient, mainly due to the multiplicity of collection schemes across the 33

London Councils causing residents confusion and lack of trust."

Way to Eco initial mission was to help reduce citizens' confusion and apathy about recycling. Now the company goals have broadened and include: prevention of recycling contamination, littering and fly



tipping; reduce waste and promote resources conservation; provide advice and services to consumers and businesses to change individual perceptions about the importance of recycling and help them maintain a sustainable approach to life/business in a cost-efficient way.

Donata explained to me the bigger picture of the business and its overall goals, "The vision is to make a social, environmental and economic impact by enhancing citizen's education and inclusion in the waste management and recycling process fostering the circular economy."

Based in London, Donata created Way to Eco as an Environmental Consultancy to advise customers that adopting sustainable approaches can generate a wide range of positive social, economic and environmental benefits. The company's service focuses within two different areas.

"As a consultancy, it offers a broad base of services such as waste audits, tailored waste prevention/



recycling plans or advice on campaigns to drive engagement and behaviour changes. In addition to this, the company also promotes an educational recycling app (for smartphones) that helps end-users, recycle better and more often."

The ground-breaking app WasteGuru is the perfect combination of informative waste management in an easily accessible format. The app provides end-users with tailored answers making easier to manage their waste effectively and responsibly. Diverse and adaptable, the app is already in use in other countries and is a beneficial tool designed specifically to support local authorities, waste management companies and businesses to meet their recycling targets.

A great feature of the app is its ability to educate end-users with clarity on the recycling process. Education is the key to make sure citizens know what to recycle, when to recycle, where to recycle and, most importantly, how to recycle. Making the right choice can lead to excellent results including environmental and financial benefits for the community, while the wrong choice can lead to problems such as low recycling rates, contamination at the material recovery facility (MRF), rejected



loads and excessive operating costs.

The apps database contains 1.5 million different products, and by simply scanning a barcode, the app provides exact info on how to sort each packaging material at a given location reducing the confusion due to different recycling schemes in different areas. The app also features 10 different languages.

Speaking to Donata on the future plans for Way to Eco, she stated that, "Being a new consultancy, the priority is to gain brand exposure and to build brand recognition and reputation. To date, we are talking to many Councils, but we are struggling to find an ambitious Council willing to run a pilot with the UK version of our App. This is our next goal. We are very confident that the successes seen elsewhere with rising recycling rates could be replicated here in the UK."

M 07375 863033
www.waytoeco.com

Spill Management Company of the Month

Market leaders in spill prevention, containment and control

Sustainability Today is proud to announce that Ecospill has been selected as our Spill Management Company of the Month, for their manufacture and supply of a wide range of spill prevention, containment and control products.

As a true market leader, they have developed a reputation as the first choice for companies who require sensible, practical and cost effective solutions for spill related issues. Ecospill was established in 2010 by Mark Sanderson and Mark Hutchinson who had both been in the industry for many years. Since then, the business has grown exponentially; and they are now one of the largest manufacturers and suppliers of spill products.

Ecospill are both an ISO 9001 and ISO 14001 registered company, and all of their products are sold through approved distributors nationwide. With an unrivalled product range, including their own absorbents, spill pallets, external safety stores and wipes, they are constantly striving to improve upon the quality, performance and reliability of their services. They are continuously working with companies to identify and develop new absorbent products and technologies for sectors including oil and gas, utilities, food and beverages, medical, construction, civil engineering, and aerospace.

Where they supply their products is heavily dictated by



legislation, looking at the health and safety and environmental impacts for any company that uses liquids. Furthermore, all of their



absorbents meet BSI standards on colour coding of sorbent materials, and they are routinely tested in accordance with the determination for water repellence or buoyancy for oil sorbent materials, and the determination of sorbency in order to validate their performance claims.

Due to Ecospill's huge growth over the past nine years, they are about to move to a new 40,000ft² premises which will include manufacturing, warehousing, offices, and training facilities. They currently manufacture around 90% of the products they supply, and this takes place predominantly in the UK. Indeed, this is a clear strategic advantage, and they are looking to invest in even more UK-based manufacturing in order to safeguard against any future developments as a result of Brexit.

"We are constantly expanding and looking to the future," says

Sales Director, Mark Neale.

"In terms of staff, we have recently taken on new members in our sales team and we are always looking for talented people to join us. We are a forward-thinking company, and we are dedicated to innovation and developing new technologies for the industry. We've also won awards from our customers because of our excellent supply services."

Certainly, due to working closely with an array of different companies, they have developed an intimate understanding of what clients require, and can provide practical, sensible and cost effective solutions for spill prevention, containment and response issues. On top of their manufacturing and supply services, they can also deliver spill response training to the industry.

With their supreme range of products and unparalleled experience, Ecospill is a true pioneer in the development of spill prevention, containment and control products. If you would like to find out more information on how they can meet your requirements, head to their website or use the contact details below.

T 01709 542259
sales@ecospill.org.uk
www.ecospill.org.uk



Tridonic announces launch of companionSUITE

Tridonic is assisting luminaire manufacturers in the configuration, transmission and control driver settings.

CompanionSUITE is a dynamic set of various software tools developed by Tridonic for long-term process optimisation, minimising production errors and enabling simple analysis of faulty devices. The range of software has now been expanded to include an analysis tool.

LED drivers have a wide range of properties and functions, enabling lighting to be tailored to individual user requirements: both the configuration of luminaries during the production process and the adaptation of settings for the respective



application can involve the definition of numerous parameters. The challenge here lies in the large number of settings to be configured. More often than not, this requires someone to pore over the

datasheets. Tridonic companionSUITE takes on this intensive task and provides luminaire manufacturers with all the information they need on the relevant driver at a glance – from power functions such as the Constant Lumen Output (CLO) through to application related settings such as automatic control of luminous intensity via motion sensor using corridorFUNCTION.

The customer is provided with a comprehensive on-screen overview of the properties and settings, and can change these as required and reprogram the devices via the interface.

T 01256 374300
www.tridonic.com

UNISIG presents new manufacturing solutions for mould makers



UNISIG adds five new models to its proven range of deep drilling and milling centres.

With the new range of UNISIG's USC-M deep drilling and milling centres, mould makers now have seven powerful and versatile solutions for workpiece diameters of up to 3,600mm and workpiece weights of up to 30t. All machines combine several processes in one machine: the deep hole drilling and milling on all four sides of a workpiece, while at the same time reducing setup times and increasing accuracy for mould makers. All machines support the high feed rates of modern indexable gundrill tools.

In addition to the use of gundrill deep hole drilling tools, some models can even support the more effective BTA deep hole drilling tools for the high performance drilling of waterline holes. A CAT50 quill allows you to perform all deep hole drilling and machining operations within the machine's working range. The machines are equipped with a 360 degree rotary work table and a programmable deep drilling and machining spindle. These can be aligned via a pivot axis with 30 degrees down and 15 degrees upwards. The latest Heidenhain TNC 640 CNC controller and Heidenhain motors and drives are used. A full guarding with oil mist extraction completes the equipment.

This machine series has now been extended by 4-6 axis machines, for deep hole drilling with gundrilling tools and milling, with a universal spindle and a short changeover between deep drilling and milling operations for the efficient production of small to medium sized workpieces.

In addition, 5-7 axis machines are available for the use of gundrilling and more efficient BTA deep hole drilling tools, each with a dedicated spindle for deep drilling and milling, to dramatically increase performance for mould makers.

High-end solutions include 7-axis machining centres for highly dynamic motion control, powerful milling spindle with gear reduction and optional pallet changer. With the model USC-M38, workpieces with a length of up to 2,000mm can be conventionally machined and deep-drilled in one clamping. The larger USC-M50 can handle up to 3,000mm long workpieces.

The machines can be equipped with an automatic tool changer with up to 120 tool positions, a laser tool presetter, workpiece probes, Heidenhain glass scales for increased accuracy, as well as an automatic pallet changer.

Further information on the USC-M series and the complete UNISIG machine programme available at: www.unisig.com or at Moulding Expo 2019 from 21-25 May 2019 in Stuttgart, Germany, Hall 9 D04.

ENMA BestgrindTec
Granulator | Shredder | Recycling Line

K-Tech Plastics
Machinery Ltd.

Competitive Prices

Great quality

UK Sales & Service

Tel: 01260 22 66 67
Mail: sales@ktech.co.uk
Web: www.ktech.co.uk

SEAMLESS Industrial Flooring

Made Simple!

- Repair & resurfacing or new build
- Anti-static, anti-bacterial, slip & chemical resistant
- Impact, abrasion & point load resistant high bay category 1 and 2
- Hardwearing and durable colour matched flooring
- Fast Nationwide installation minimum downtime
- FREE survey & uncomplicated warranty

Call the industrial flooring experts on 01952 740400

RESPOL

www.respol.co.uk

Increase your mold manufacturing versatility using the power of gundrilling with the leaders in deep hole drilling, UNISIG. Offering complete solutions for everything from simple to complex mold components, UNISIG machines help moldmakers improve efficiency, throughput and precision with outstanding part-processing versatility at an exceptional value.

TAKE YOUR MOLDMAKING OPERATIONS FURTHER WITH UNISIG TODAY.

Find out more at www.UNISIG.com

UNISIG

UNISIG TAKES MOLDMAKERS FURTHER

MOULDING EXPO

International Trade Fair for Tool, Pattern and Mould Making

21.05.-24.05.2019 MESSE STUTTGART Hall 9 D04

Deb Group brought into expanded SC Johnson Professional™

In January 2019, Deb Group was brought into an expanded SC Johnson Professional™ organisation. SC Johnson™ began its return to the professional market in 2015 with the acquisition of Deb Group and has now brought the company into the expanded organisation to provide expert skin care, cleaning and hygiene solutions for industrial, institutional and healthcare users.

SC Johnson Professional™ incorporates the Deb range of specialist occupational skin care products, along with the well-known and highly trusted SC Johnson cleaning and hygiene brands enhanced for professional use.

The company's purpose is to deliver innovative products and solutions with outstanding performance that respect the environment, create efficiencies, reduce inventories, simplify training and provide a positive user experience.

Luis Zunzunegui, Vice President at SC Johnson Professional™, says, "SC Johnson Professional™ is



bringing innovative, quality products and services to professional markets built on a deep understanding of customer needs and a vision to 're-think the professional experience' with the user in mind. We look forward to continued expansion of the SC Johnson Professional™ portfolio in the coming years as we grow to meet the needs of customers in markets around the world."

With deep category expertise, SC Johnson Professional™ provides products ranging from skin care, floor care, surface care and healthcare, as well as solutions for air care, storage and pest control.

T 01773 855100
www.scjp.com/en-gb/about-us

Putting workers' wellbeing front of mind

All year round, workers' skin is at high risk of suffering from conditions such as occupational skin disorders (OSDs) – skin diseases caused or made worse by work-related exposure.



OSDs are a silent threat and an industry issue that often goes unreported and unnoticed. Paul Jakeway, Marketing Director at SC Johnson Professional™ explains how implementing the 4-Stage Behaviour Change Process could make a difference to workplace culture and the wellbeing of workers.

The threat of OSDs to industry and the workforce is widely underestimated. In fact, it affects 40% of workers at some point in their career. The onset of an OSD can, in many cases, be entirely prevented, or the extent of damage mitigated, simply by adopting an effective skin care regime.

The SC Johnson Professional™ Skin Care Programme has been developed to help workplace managers encourage the adoption

and integration of skin care best practice. The programme incorporates a 4-Stage behaviour change process, an effective workflow to help managers nurture and embed behaviour change in any workplace:

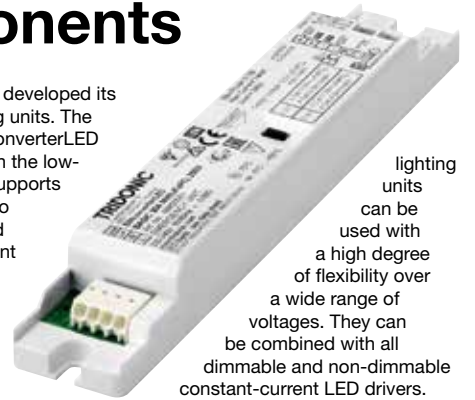
- ◆ Stage 1 – Define
- ◆ Stage 2 – Implement
- ◆ Stage 3 – Communicate
- ◆ Stage 4 – Embed

It is vital that we ensure that healthy skin remains a priority in the workplace, helping to promote employee health and wellbeing. By implementing these 4 Stages to superior skin care, we can aid the delivery of your health and safety plan, whilst ensuring that you embed positive skin care behaviours and deliver a beneficial culture change in your workplace.

T 01773 855100
www.scjp.com/en-gb/about-us

Upgrade for emergency lighting components

Tridonic has further developed its emergency lighting units. The new generation EM converterLED BASIC MH/LiFePO4 in the low-profile housing now supports not only NiMH but also LiFePO4 batteries and operates with intelligent battery management.



The new generation of the EM converterLED BASIC MH/LiFePO4 emergency lighting units in the low-profile housing has been designed for luminaires with single battery systems. In addition to nickel metal hydride batteries (NiMH), the units can now also be operated with lithium iron phosphate batteries (LiFePO4). Smart battery management ensures that the right charging algorithm is used for the particular battery type. The batteries therefore achieve their optimum operating life and at the same time the maintenance requirements are reduced.

There are versions available for LED modules with voltages of up to 50V (SELV), up to 90V and up to 250V, which means that the emergency

lighting units can be used with a high degree of flexibility over a wide range of voltages. They can be combined with all dimmable and non-dimmable constant-current LED drivers. The rated operating time is one or three hours and can be set via Duration Link. The output power remains constant.

The units operate in standby mode and are designed for manual testing. An optional test button is available for checking the function of the unit. The expected life is four years for NiMH batteries and four to eight years for LiFePO4 batteries. The manufacturer provides a guarantee of one to three years. The life of the lighting unit is 50,000 hours. The manufacturer provides a five year guarantee for the emergency lighting unit.

www.tridonic.com

Cleaning & Facilities Management News

TC Security Services awarded 100% Achilles Audit

Following a rigorous two day assessment, TC Facilities Management (TCFM) has once again successfully completed its 'Achilles' annual audit for the fourth consecutive year. The audit saw a score of 100% being awarded in all four key areas that the audit measures: Corporate Social Responsibility, health and safety, environment, and quality.

This 100% achievement validates TCFM's operational capability, competence and compliance and follows the recent news that TCFM achieved a clean sweep in passing three external management systems audits including the new ISO 45001:2018 standard. The two day visit included an audit of both head office and a client site.



The auditor was particularly impressed by:

- ◆ The great team effort with the experience welcomed and enjoyed by everyone involved
- ◆ The breadth of documentation to evidence the quality management systems in place
- ◆ The ongoing commitment to our duty of care of our colleagues by investing in innovative technology
- ◆ The design & navigation of the training matrix in use
- ◆ The use of the site visit report which captures the four key areas that the audit measures
- ◆ Our down-to-earth approach, doing what we say we do in a straightforward and uncomplicated way.

At the site audit, the auditor commented about the appearance, attitude & knowledge of security officers to

ensure the job they do is done to the very best of their ability.

On receiving the news of the audit score, Richard Grafham, Group Compliance Manager, said, "I am delighted in this result. In achieving 100% for the second year in row, we have been able to demonstrate that our team is committed to consistently delivering first class service to our customers. Something which gives businesses, partnered with Achilles UVDB community, confidence that we can deliver what they need."

T +44 (0)1737 814016
info@tcfm.co.uk
www.tcfm.co.uk

Floorbrite celebrates Green Glory

Manchester based cleaning and facilities service provider,



Floorbrite, is celebrating after collecting another prestigious Green Apple award, presented to the world's greenest companies. Floorbrite was awarded the accolade this year for waste management innovation and increasing sustainability at ESB Carrington Power Station, Manchester.

Trudie Williams, Floorbrite's Waste and Environmental Consultant, successfully implemented a series of measures at Carrington Power Station to reduce its carbon footprint, increase the recycling output and divert waste from landfill – all of which impressed Green Apple judges.

Nik Wyers, Joint Managing Director at Floorbrite said of the award: "This award marks the fourth year running that Trudie and her team have been celebrated for their commitment to sustainability and we simply couldn't be more proud of their achievements. It's a great honour to work with ESB Carrington Power Station who are the leading edge in gas powered technology, and yet again Trudie has done an incredible job of creating a bespoke, effective solution to improve its sustainability."

Iain McGregor, Finance Manager at Carrington Power Station added: "We were keen to work with Floorbrite to reduce our carbon footprint and with their help; we have successfully achieved our target of zero to landfill, amongst many other targets."

www.Floorbrite.co.uk

The Floorbrite Group

As one of the UK's top 100 and largest family run cleaning and facilities service providers, the next generation of Floorbrite are ensuring that we still treat our customers with the same care and attention as when we first began in 1972.

We provide commercial cleaning and facilities services across the UK. Providing daily, industrial and window cleaning services to all sectors of industry. Washroom, hygiene and consumable supplies, waste management, pest control, plants and grounds maintenance, security, building maintenance and MEWP hire ensure we deliver a complete solution to our clients.

0161 972 3000 info@floorbrite.co.uk www.floorbrite.co.uk

The CropTec Show

The CropTec Show, held at Peterborough's East of England Showground from 28-29 November 2018, is for all growers, agronomists, business advisers, suppliers and scientists to challenge and discuss the best ways forward to remain profitable. 2018 was a sold-out show, featuring more than 170 exhibitors, making it the UK's leading technical and knowledge exchange event for the arable farming industry.

The 2019 show was even bigger and better this year, featuring a wide range of new and exciting seminar topics and content-driven hubs providing unmissable insight into new technology and cutting edge agronomy. Alongside the seminar and hubs, the sprayer demonstration area returned, with the latest sprayers available to test drive.

The CropTec show offered visitors the chance to explore a wide range of novel science and innovative technology in an informal atmosphere, creating the ideal forum for visitors, exhibitors and researchers to exchange ideas and experiences. The knowledge hubs offered short, sharp presentations delivering key take-away messages on relevant topics.



The CropTec Show returns to Peterborough's East of England Showground this year from 27-28 November 2019. This is our pick of the best exhibitors from last year's show, listed here in alphabetical order: Gemini Agriculture, Grange Machinery & White Air Solutions. Further details can be found on this page.

www.croptecshow.com

Gemini Agriculture

Gemini Agriculture was founded in 2015 by James Clovis and James Kennedy and is now a well-established brand with an increasing portfolio. Reliability, quality and service are the foundations of our business, as we understand that these are key requirements of the modern agricultural market place in which we operate.

As a streamlined business, we offer a professional alternative to the ever-reducing number of corporate manufacturers in the industry. Quality and provenance are vital; as a result, the majority of our products are manufactured in the UK, taking advantage of the high quality facilities that are on our doorstep. We are proud to be members of the Crop Protection Association and support their mission to protect British agriculture.

Our brands, including EXIMUS, NURON and CLAW, are well regarded in the industry as effective alternatives to the brand leaders,



supplied at a competitive price. We have also brought innovative new products to the market, such as ITCAN SL – the first liquid maleic hydrazide, which saw first sales in 2018.

This summer will see the launch of BULLET, our new ferric phosphate slug pellet, which we believe will be hugely important to growers this year and in the future.

For more information, please go to our website at: www.geminiag.com

Grange Machinery

Grange Machinery is a family-run company based in Holderness, East Yorkshire. We sell and supply agricultural machines, wearing parts and offer affordable solutions to farmers nationally and locally. The company distributes machines across the UK and Europe.

Our Low-Disturbance Toolbars help lower the cost of crop establishment and provide farmers with a versatile machine to use with a range of implements. Grange Machinery offers products that provide current systems the versatility and flexibility in varying ground conditions and crop establishment processes.

Our toolbars will improve soil structure while



lowering the cost of establishment resulting in both healthier margins and increased profit for your business. We also offer an extensive range of wearing parts, points, leg bottoms and also cater for the Auto Reset market.

Contact
T 01482 751711
rjones@grangemachinery.co.uk
www.grangemachinery.co.uk

What do White Air Solutions do I hear you ask?

Firstly, we are a SME based in Stickney, Boston and believe it or not we have developed a fully patented air purification machine that makes fresh produce such as fruit, veg and flowers live longer using a process called Photocatalytic oxidation (PCO). The technology is organic and the only bi-products produced are a trace amount of CO₂ and H₂O.

Our PCO machines work by removing Ethylene and other VOC (Volatile Organic Compound) gases from the atmosphere as well as viruses, fungal and bacterial spores. Ethylene removal is extremely important in extending shelf life because it's Ethylene which acts as a natural ripening (or 'aging') hormone, the release of Ethylene into a storage environment is what causes fresh produce, fruits, flowers and many other plants to deteriorate.

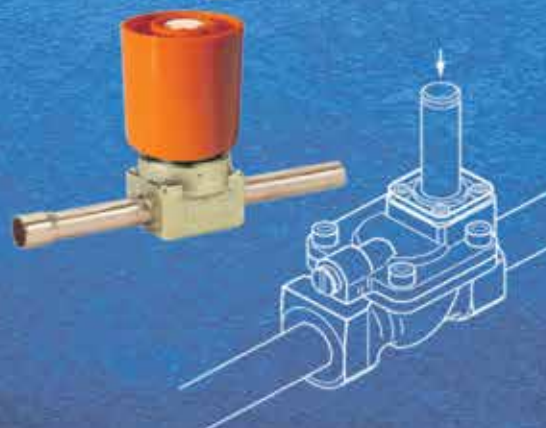
By removing Ethylene, VOC gases, viruses, fungal and bacterial spores, our machines will add



benefits to various supply chains that will prolong storage life, promote a healthy atmosphere, reduce waste and also reduce the carbon footprint of your business.

For more information, please visit our website at: www.whiteairsolutions.co.uk or contact us at: info@whiteairsolutions.co.uk

Pumps & Valves News



*If you need to operate a solenoid valve manually,
you need a Solenoid Valve Operating Magnet!*

Solenoid Valve Operating Magnets
02380 323745 **enquiries@fridgenius.co.uk**

Top Drawer: No ordinary event

Breaking boundaries and defining trends, Top Drawer presented an extraordinary, global edit of the very best products across the lifestyle spectrum for its Spring/Summer 2019 show. With an expert selection of more than 1,500 of the freshest names and best brands across 11 curated sectors (we highlight five below), the UK's leading design-led lifestyle show returned from 13-15 January 2019, taking over the entirety of the iconic Olympia London.

HOME showcased the best in Interior Accessories, Kitchen & Dining, Furniture & Lighting, Luxury Tableware and Outdoor Living. Within GIFT, off-beat Spanish brand Doiy, and independent UK-based global award-winning home and giftware brand, Cubic were among the expertly curated selection of home-grown and international design-led brands that were showcasing their new ranges and best sellers.

As the world's leading creative show for GREETINGS & STATIONERY, Top Drawer was a must-visit for inspired retailers to discover stunning and unique greetings cards and stationery from a wide range of new and established brands showcasing new products and designs.

With the UK's largest edit of jewellery and accessories the FASHION sector featured MR – a new area showcasing an exclusive edit of fashion and lifestyle brands that embody the modern man.



PLAY returned after a successful September launch – bringing with it an outstanding and unique curation of children's products, ranging from textiles and clothing to beautiful treasures that will capture the imagination of both kids and their parents.

Top Drawer Spring/Summer returns to London's Olympia next year from 12-14 January 2020 but the Autumn/Winter show is on earlier from 8-10 September 2019. This is our pick of the best exhibitors from this year's January show, listed here in alphabetical order: Amanda West, Atty & Smart, Avalana, Dainty London Jewellery, ELM RD, Emma's Soap, Hector & Queen, Ladies Who Lunch Jewellery, Little Sun, Lola & Mawu, Nibbling & Sarah Horne Botanicals. Further details on this page and the next.

www.topdrawer.co.uk

Avalana

Avalana is a UK design brand based in Manchester, and was founded by Hazel Carruthers, a designer with over 10 years' experience in various creative industries. The new brand aims to create truly stunning designs for the home and gift market and each tells a unique story; prints and patterns that draw inspiration from travels, folklore and nature for customers looking for something truly special, and with an eye for design.

Each print is lovingly created through imaginative vigour. Individual designs start life as a sketch or painting that is then carefully curated using digital methods. Passionate about delivering beautiful hand illustrations, paintings and stunning prints that inject a sense of luxury and wonderment.

The debut collection is inspired by a recent trip to Costa Rica. Highlights from the collection include three new wall murals, each featuring a striking scene straight from the rainforest. The collection as a whole captures the essence of tropical glamour and is sure to inject a sense of luxury and summer time.



Avalana is proud to offer an array of products from luxury velvet cushions, gold lined lampshades and floating chiffon scarves, to beautiful gift items and limited edition art prints, all made in the UK. Please enquire for information.

M 07731 846100
info@avalanadesign.co.uk

Amanda West

It was during my final year in BA (Hons) Illustration in 2018 that I started to develop the designs which are now featured in my homeware collection and fashion accessories. My colourful designs are inspired by nature and the exquisite hues of Oriental art and silk garments, combined with the harmonious aesthetics of florals and fauna.

My mum is from Singapore and having been on numerous trips to visit family, and growing up with her Asian influence, this has had a clear impact on my designs today. I am also fortunate to live on the South West coast of Devon which is brimming with inspiring surroundings. I often take trips to the coast or local National Trust gardens to be inspired by the movement of nature, texture

of plant life, and the ever-changing colours throughout the seasons.

The design process I use is often mixed media, using various mark making and collage to give texture to my elements. Besides using collage, I also



enjoy the depth that painted motifs can add to my designs, and by digitally merging all of these elements together my final pieces are formed. Texture plays a huge part in my design process, which is evident in the fine detail produced on every design. I always source the most luxurious and tactile fabrics, along with the finest makers, printers and machinists to make Amanda West products exquisite.

hello@amandawest.co.uk
www.amanda-west.com
www.instagram.com/_amanda_west

ELM RD.

In a world that seems to always be operating at full-speed, it is often the small rituals in life that help us slow down, be present and feel at peace. At ELM RD. we have developed a unique collection of specially formulated botanical scents for your home and your wellbeing. We believe that self-care should be part of your daily routine. Lighting a candle, listening to the crackling sound of its wooden wick and savouring the therapeutic aromas infused into our candles and mists are effective yet simple ways to achieve this.

Every one of our botanical scents has been designed to tell a story that evokes positive memories & emotions. See how the story unfolds with the top notes that set the scene, the heart notes that draw you in, to finally arrive at the base notes that inspire the emotions beneficial to the mind, the heart, the body and the soul.

Well-being, sustainability & caring for our planet are at the heart of ELM RD. This is why all our products are 100% natural, vegan & cruelty free.



Contact
M 07585 506574
hello@elmrd.com
www.elmrd.com
www.instagram.com/elm.road

Emma's Soap



Born out of necessity, Emma's Soap was designed to nourish the skin using only sustainably sourced ingredients without adding to the destruction of the planet. Based in Britain, Emma's Soap is all handmade using ecological and natural oils, the finest grade of oil, extra virgin, first pressing, cold processed (no solvents) Organic and unrefined (no bleach). Nothing else is added, no petroleum or mineral oils, no artificial fragrances or colours no preservatives or foaming agents and No Palm Oil. Just a bar of oils and butters.

Beautifully presented in Organic fair trade cotton, the colour and pattern of the fabric is designed to aid the labelling by giving a visual identity to each bar.

The Soap is first wrapped in parchment paper which is quilon and chlorine free, two major pollutants of the waterways. Then it's wrapped in fabric which can be up-cycled or returned. Ideas how to use the fabric are promoted on the label which is printed on recycled card using vegetable ink. The label, raffia and parchment paper all compostable. "There really is no landfill waste from the packaging," says Emma. And it's good for your skin too, shortlisted in the FreeFrom Skincare Awards 2016/2017.

T 01803 770109
hello@emmassoap.co.uk



In this busy world we live in,
slow down and breathe ELM RD.

Specially formulated botanical scents for your home and your wellbeing



07585 506574

hello@elmrd.com www.elmrd.com

Ladies Who Lunch Jewellery

Ladies Who Lunch Jewellery was born over (you've guessed it!) a particularly lively lunch. After an animated discussion, three ladies, two sisters and their friend, decided to create a range of deliciously different jewellery – the kind of pieces they wanted to wear but were never able to find on the high street.

Based in the South of England, they design & handcraft a new collection twice each year. Offering original, contemporary pieces that are effortlessly stylish, their jewellery reflects both the colours of the season & current fashion trends. Whether it is a statement piece or classic staple, each unique design is crafted from semi-precious stones and crystals on silver or gold plate and beautifully finished in an array of colours from gorgeous bright to sophisticated neutrals. The ladies are always happy to discuss bespoke designs and colour combinations.

Contact: Mandy Browne
T 01494 729813
lwljewellery@gmail.com
www.lwltrade.co.uk



Lola & Mawu: Offering a stunning range of West African décor

An online boutique retailing a range of stunning – often completely bespoke – products, Lola and Mawu retail items found all over West Africa, placing an emphasis on showcasing only the most beautiful and authentic products. What's more, Lola and Mawu believe in retailing products which celebrate natural materials and organic shapes. This becomes immediately evident once browsing Lola and Mawu's range.

Lola and Mawu's range of products is diverse, extending to include: baskets, cushions, throws, lighting, scarves, jewellery, tote bags, and children's cuddly toys, to name but a few. Indeed, there are many other quirky and interesting products with which to decorate a room with; adding vibrant colours and patterns to a space. From decorative beads, bronze elephant sculptures and tea light candle holders, there's something to take anyone's fancy.

What makes Lola and Mawu such a unique and admirable retailer is not only their range of products, but the methods by which they obtain them. All of Lola and Mawu's products are ethically handcrafted, fairly traded and cruelty-free. Indeed, there's a real value held for traditional skills such as crafts and woodworking, which is why the team at Lola and Mawu do everything they can to ensure the survival of these skills and the generation



of income for those practicing them.

M 07380 170206
hello@lolaandmawu.com
www.lolaandmawu.com

LOLA & MAWU

Cool calm collectable

Classic but contemporary, whimsical yet robust, indefinably though quintessentially British, Atty & Smart is a beautiful lifestyle brand.

The company was created by sisters Lucy and Charlotte who were inspired by exquisite botanical illustrations of the early 20th Century with their faithful and engaging depiction of British flora and fauna.

Producing unique, elegant designs and applying them to fine bone china, and a range of other items, is our passion.

The launch of our debut collection in 2017 is the realisation of a vision stretching back to a day when their

father found for them a beautiful old collection of British decorative botanical illustrations, with which they instantly fell in love.

We have always admired the redoubtable spirit of those botanists and illustrators of the early 20th Century and were beguiled by the charm and elegance of their drawings.

Our collections are designed and made in Britain and are redolent of a country of village cricket, picnics, homemade elderberry wine and sumptuous High Teas! A Britain of Buckingham Palace, The Tower of London, Swallows and Amazons and 'Rain Stopped Play'!



As for our name – when Lucy's son was little he couldn't say 'aunty' and so he named Charlotte 'Atty'. Lucy's surname is 'Smart' – so together we are 'Atty & Smart'.

Contact
M +44 (0)7920 030237
info@attyandsmart.com
www.attyandsmart.com

Hector & Queen

Nestled in the heart of the Cotswolds, Hector & Queen designs a range of award-winning gifts for little ones and those not so little!

In addition to our award-winning handmade children's furniture, we design a unique and very adorable range of hand-felted baby animal booties and children's slippers. There are currently twelve award winning designs, including lions, polar bears, crocodiles and unicorns to name a few, all making fun and very unique gifts while being practical and lots of fun!

In November last year, we launched our fabulous felted animal rugs, including lions, crocodiles, unicorns, zebras and foxes, adding a touch of magical adventure to any room, be it on the floor, wall, chair or bed! We're passionate about our endangered animals and as such, support TUSK, helping to raise awareness in a fun and memorable way, about the need to protect our beautiful animals!



For those not so little we have a beautiful collection of Fair Trade Handmade Baskets –



perfect for the beach/shopping as well as making a stylish alternative for all your storage needs!

To view the full collection, please contact:
T 01285 800085
info@hectorandqueen.co.uk
www.hectorandqueen.co.uk

Who said design can't change the world?

Little Sun was launched at London's Tate Modern by internationally renowned artist Olafur Eliasson in 2012. The social business designs and delivers thoughtfully-designed solar lamps and chargers worldwide, especially for the 1.1 billion people living without electricity. Every product sold in areas with electricity brings one at a locally affordable price to Sub-Saharan Africa, where Little Sun works with local entrepreneurs, creating local jobs, and generating local profits.

For people without electricity, using solar instead of toxic kerosene lamps means they can work, cook, and study safely in the dark. For those with electricity, Little Sun is the perfect introduction to clean energy, great for camping, as decorative garden lanterns, or for outdoor adventures. They are robust, weather-resistant power packs which are charged by the power of the sun.

Worldwide, the solar lamps are a symbol for universal access to energy and climate action. And with each



purchase, you bring solar energy to the people who need it the most. Since the social business' inception, over 830,000 Little Sun lamps have been distributed worldwide, with more than half going to off-grid areas.

Contact
T 0049 (0) 30 2000 391-41
business@littlesun.com
www.littlesun.com

Unique and meaningful jewellery from Dainty London

As the founder of Dainty London, Jade Sammour has been creating handmade silver jewellery since 2011. In the years immediately following this, she attended numerous accredited jewellery courses through The Goldsmith's Centre, The British Academy of Jewellery (BAJ), and The City Literary Institute, as well as being mentored by Hopton & Furlong, St Albans.

After compiling this wealth of knowledge, Jade established Dainty London in 2016 in order to share her stunning creations with customers. Each of her jewellery pieces has a special narrative, with the idea that the wearer develops a deep and meaningful emotional connection with it.

Dainty London's jewellery comes in five main collections: Woodland, Grain, Cornish Coast, Archetypal Bridal, and The Diminutive Collection. Each of these ranges has a unique and intimate inspiration, ensuring the eventual owner wears something truly special. In fact recently, Dainty London was worn by Sabrina Adhore at the Oscars and the Versace party in LA.

Each item is made from recycled silver when possible, as well as sterling silver, 18ct gold plate and 9ct gold. Using techniques including granulation, sand casting, forging, and etching, Dainty London can personalise any item as well as doing bespoke commissions. A perfect mixture of love, passion and excitement goes into creating every



piece, meaning customers can be assured that Dainty London's exquisite jewellery will not disappoint.

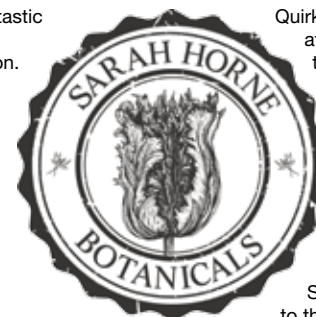
M 07545 524863
info@daintylondon.com
www.daintylondon.com

DAINTY LONDON

Sarah Horne Botanicals

Sarah Horne Botanicals had a fantastic start to 2019, with Top Drawer kicking off a great debut show season. The brand now has stockists in the UK, Switzerland and the USA. Additionally, Sarah Horne Botanicals' fine bone china is used within the hospitality industry, including the luxury boutique Arden Hotel in Stratford-Upon-Avon.

The British-made homeware and giftware collection is designed to contrast and compliment. Sarah's signature black and white colour scheme offers endless possibilities and is paired with black-colour accents for a contemporary pop. An eclectic yet elegant style is achieved by combining different floral designs in the same setting.



Quirky styling ideas are always presented at shows and points of sale, including the vase holding utensils, the lidded jar storing cooking spices or cotton wool and the teacups serving gin! And of course, as a nudge towards the origins of the story, the pieces are particularly gorgeous paired with flowers and Sarah wears her Chelsea Gold Medal-winning hat when adding floral flourishes.

Sarah Horne Botanicals is looking forward to the next show season to demonstrate how to build a unique, creative interior style and bring the undeniable natural beauty of flowers into the home!

T 01926 424826
orders@sarahhornebotanicals.com

Fashionably inspired teething accessories

The Top Drawer event at the London, Olympia 13-15th January this year saw an amazing collection displayed by exhibiting company, Nibbling.

Nibbling is a company that specialises in the production of children's teething accessories. Bringing Owner Emily Sunderland Sutter's fashion background into its creative process, the company creates trendy, attractive and safe teething accessories.

A note-worthy crowd favourite for the company was their reputable product line, Natural Collection.

These award-winning products include a variety of Teethers that all feature attractive character and are made from untreated natural wood and BPA-free silicone.

The company gained valuable networking exposure at the Top Drawer event, showcasing their new range of products through their Spring/Summer 2019 collection. All beautifully designed, the teething accessories maintain their free from BPA guarantee and are paediatrician approved.

Infusing fashion and accessibility with reliable peace of mind for



parents, Nibbling's product range remarks the clear innovative, captivating process that goes into their production.

For any more information see below.

M 07953 958860
www.nibbling.com

ThinCats tailors buy-out for refurbishment specialist, sq-m2

ThinCats, the leading fintech lender to mid-size SMEs, has facilitated a management buy-out for sq-m2 Limited, a leading fit-out and refurbishment specialist in London and the South East.

Founded in 2003, sq-m2 is a traditional build contractor, undertaking projects across three main types: commercial; refurbishments; and high-end residential works. Founded in 2003 by Steve Hart, the sq-m2 team is well regarded as 'buildability' experts with a range of high-profile clients, including British Land, BNP Paribas & Activision.

sq-m2 was directed to ThinCats by accountancy firm Moore Stephens. By working closely with sq-m2 management, ThinCats quickly tailored a bespoke MBO that would suit sq-m2's ambitious plans. This MBO marks an exciting proposition for the management team who intend to drive growth and expand their staff.

sq-m2 Founding Director, Steve Hart, commented, "It was clear from the start that we wouldn't fit into the high street banks' rigid lending framework. So when Moore Stephens recommended ThinCats, we were immediately struck by their efficiency and ability to provide a unique funding solution for us. Working with ThinCats was an experience, rather than just a transaction. The buy-out has been a great



success for all involved and represents an extremely exciting opportunity to build on a business which is highly regarded in the sector. We would like to thank both Moore Stephens and ThinCats who have been incredibly supportive throughout this deal."

ThinCats Director, Kash Moghul, added, "We are delighted to finalise our funding with sq-m2 and are excited to work with management on this next step in their journey. We are grateful for Ish Alg and Viqas Chohan at Moore Stephens who were an absolute pleasure to work with, showing great communication at all times and who were vital to getting the deal done."

T 01530 444040
loans@thincats.com
www.thincats.com

BauderROCK: Noise reduction and sound absorption

BauderROCK insulation within a waterproofing system provides exceptional benefits for airborne sound and rain noise reduction, and sound absorption within a building. This insulation is suitable for all flat roofs utilising single ply or bitumen membranes in a warm roof construction. BauderROCK is particularly beneficial where projects need to deliver a high level of sound diminution for the building occupants. Addressing the acoustic performance of a flat roof early in the design process is key in ensuring an effective solution. The three considerations in acoustic design are airborne sound, rain noise intensity and sound absorption.

Airborne sound

Airborne sound, such as road, rail and air traffic, and surrounding industrial operations, is transferred from a building exterior envelope into the building interior. The BauderROCK mineral wool insulation significantly reduces noise transmission by 47-48dB (235mm-255mm) for noise transmitted through the roof.

Rain noise intensity

Rain noise reduction is a separate consideration, relating to the impact rainfall can have on the indoor noise levels. The BauderROCK predicted Rain Noise Intensity reduction measures between -52.0dB and -52.5dB (235mm and 255mm).



Sound absorption

Reducing this noise level is especially crucial in buildings such as sports halls and manufacturing plants where there is often a great deal of noise generated from within the building. BauderROCK Acoustic Infill provides high performance sound absorption when utilised with perforated metal decks.

Contact
Book your meeting now:
0845 271 8800

Base Structures gives the NEC a spectacular new look

As part of an exciting £4.5 million transformation of Birmingham's NEC, Base Structures has installed a stunning fabric façade to the exterior of Halls 1 & 5.

Designed by architects Acivico, the 6860sqm of printed fabric panels and backlit pyramids create a striking visual effect, giving the NEC a futuristic new look for its 7 million annual visitors.

Base Structures also supplied and installed a programmable colour wash backlighting feature with an infinite colour range, adding to the immersive effect.

The installation took 10 weeks on site, with the creative process from design and conception through to fabric and steel manufacture and installation lasting 5 months in total. Collaborating with a large team and working with a challenging 4,452 metres of steel, the stunning results were achieved within a tight programme of work. With a fixed deadline of 24th August, careful planning and good supply chain management was essential and ensured the team finished a week ahead of schedule.

Mark Smith, Director at Base Structures,



said, "It was a pleasure for Base Structures to be part of such a transformative project for a big name in the UK events industry, and to work for such a professional client whose proactive approach went a long way to ensuring its success."

www.basestructures.com

Castle Gates & Automation

Founded in 2008 by Nick Lipman, the company was set up in order to provide exceptional and efficient security solutions of metal and wooden gates and railings, installation of gate automation systems and entry control systems, barrier and bollard installation, CCTV and garage door mechanisms.

It supplies top quality gate motors and intercom systems and can supply everything needed for security, from hard-wired or GSM intercoms to electronic gate openers that are straightforwardly activated via a key fob. It specialises predominately in providing customers



with standard and bespoke security solutions, from audio, video or keyboard entry-control and gate automations to its range of CCTV cameras.

When it comes to installation, the company works thoroughly, taking care to ensure that the finished product is of a high technical and visual quality. It is happy to help customers with any

support they may need throughout the operating life of their equipment.

It is used to dealing with architects and building firms to provide advice and entry solutions as part of a project team.

For reliable security, whether domestic or commercial, give Castle Gates & Automation a call, or if you would like to view more about its products and services, then check out the website.

T 01442 253341
info@castlegatesandautomation.co.uk
www.castlegatesandautomation.co.uk

STRUCTURAL WARRANTY

**CML ACCEPTANCE
RATED CARRIER
NEW BUILD
PART BUILD
COMMERCIAL PROPERTIES
EXTENSIONS
RETROSPECTIVE
SELF BUILD PROPERTIES**

**Compliant with the Government
Help To Buy Scheme**

**t. 01827 213407
m: 07873605516
e: steve@ahci.co.uk**



Advantage

Fuelwood: Forestry & Firewood Machinery Specialists

Fuelwood (Warwick) Ltd has been a manufacturer and dealer of a wide range of Forestry, Firewood & Landscaping Machinery for over 20 years. The range of machinery is designed to maximise profitability from processing cleared timber, and to also mechanise extraction itself.

It also has a team of Service Engineers on the road supporting products across the UK, and parts can be shipped overnight from the well-stocked stores at its HQ in Warwick if/when required.

From winches, trailers, log splitters, kindling machines, firewood processors, portable sawmills to wood chippers and mulchers, Fuelwood can supply a solution throughout the UK and Ireland, through direct sales and a network of strategically placed dealers, and finance can easily be arranged if required. Second hand machines are also available, providing cost effective solutions



for more occasional users.

For more information, to arrange a demonstration or to enquire about our range of machines, please give us a call on 01926 484673 or visit our website at: www.fuelwood.co.uk




CALL
US
FOR
DETAILS
&
DEMOS

FUELWOOD

Forestry & Firewood Machinery Specialists



**Log Splitters
Cone Splitters
Timber Trailers
Tipper Trailers
Sawbenches
Woodchippers**

www.fuelwood.co.uk
01926 484673

Get your cashflow in order in time for VAT reversal

With six months until the VAT reverse charge comes into force in the construction sector, Henry Howard Finance is encouraging businesses in the industry to prepare themselves both financially and administratively.

In late 2018, the government introduced changes to the way construction companies will collect VAT. From October 2019, only client facing construction companies at the top of the supply chain will charge VAT. Further down the supply chain, VAT will be calculated as a paper exercise and registered on the invoice as a 'reverse charge'. Companies registered



with the Construction Industry Scheme (CIS) will fall into the reverse charge category of VAT collection. Those which aren't CIS-registered must charge VAT. There are fears, however, that many smaller construction companies could struggle financially because they have previously used the VAT collected to help cash-flow while waiting to be paid for building jobs.

Marie Dunkley (pictured), Head of Vendor Hard Asset at Henry Howard Finance, says that for many smaller companies the change could spell the end of the road, unless they prepare themselves early.

"Our fear is that the introduction of this VAT reversal charge, and the longer payment terms for those at the end of the supply chain, are going to be the last nails in the coffin for many of these smaller businesses. We understand that HMRC is doing all it can to combat fraud, but I do feel that by introducing this step it will hurt those who can ill afford extra administration, as well as extra time until they get paid."

For more information or to learn more about asset funding options offered by HHF, visit: www.henryhowardfinance.co.uk or contact 01633 415222.

Net-Zero Homes Ltd.



Quality ICF built shells using the Quad-lock ICF panel system, Net-Zero Homes can assist with the design, planning, building regulation submission and the construction of the shell, providing the self-builder with a fast, warranted building, ready for the follow-on trades.

Take the stress out of building your dream home or extension.



Call Stephen Campbell at Net-Zero Homes Ltd. on 07771 311311 or email netzerohomeltd@gmail.com

Reliable BBA approved waterproofing products from Delta Membrane Systems

We are delighted to announce the achievement of the British Board of Agrément (BBA) certification for NB 1 (19/561911). Koster NB 1 is mineral coated waterproofing slurry containing crystallising and capillary-plugging agents. It can be used for waterproofing against ground moisture and for non-pressurised and pressurised water. NB 1 Grey is characterised by its excellent resistance to pressure and abrasion as well as chemical and sulphite resistance. "The BBA's certification of



Koster NB 1 is a significant milestone for this excellent product, the symbol of quality and reassurances in our structural waterproofing solutions. We believe that this will provide Specifiers, Architects, Engineers and Contractors alike with even greater confidence," says Christopher Burbridge, Delta's Managing Director.

T 01992 523523
info@deltamembranes.com
www.deltamembranes.com



Ecodek has been manufacturing a range of decking products since 2004. The ecodek® material is specifically developed from an innovative high quality Wood Polymer Composite material.

Ecodek produced over 1 million linear metres of decking in 2018, consuming 3,600 tonnes of sustainably sourced wood and recycled plastic (HDPE taken from recycled milk bottles!).

ecodek® is the only WPC product manufactured in the UK and proudly bears the Made in Britain

Marque. Ecodek is serious about its environmental credentials and has achieved proven carbon negative production of its WPC materials – a huge achievement in modern manufacturing.

ecodek® boards can be supplied in bespoke lengths to minimise waste, will not warp, splinter or rot, and are an extremely low maintenance material that is 100% recyclable and come with a 25 year warranty.

ecodek® decking is ideal for both commercial and residential projects with its range of board profiles and colourways. With the versatility to adapt



to urban or traditional design schemes, ecodek® decking systems will allow the designer to transform outdoor spaces and gardens into feature areas.

Contact the Ecodek team at: www.ecodek.co.uk or email: enquiries@ecodek.co.uk or call 01978 667840.

Water, Energy & Environment News



Need a bin? We've got just the thing
Flip, swing or multi-compartment, innovative all-plastic sack holders to sustainable hardwood external bins.

Call us now on 01684 295782 www.trojanbins.com
email: sales@trojanbins.com



Instant. Reliable. Non-Contact.

Moisture Measurement from Lab to Line on All Material Types



www.MoistTech.com 941-727-1800

Hillside culverts cleared to reduce flood threat

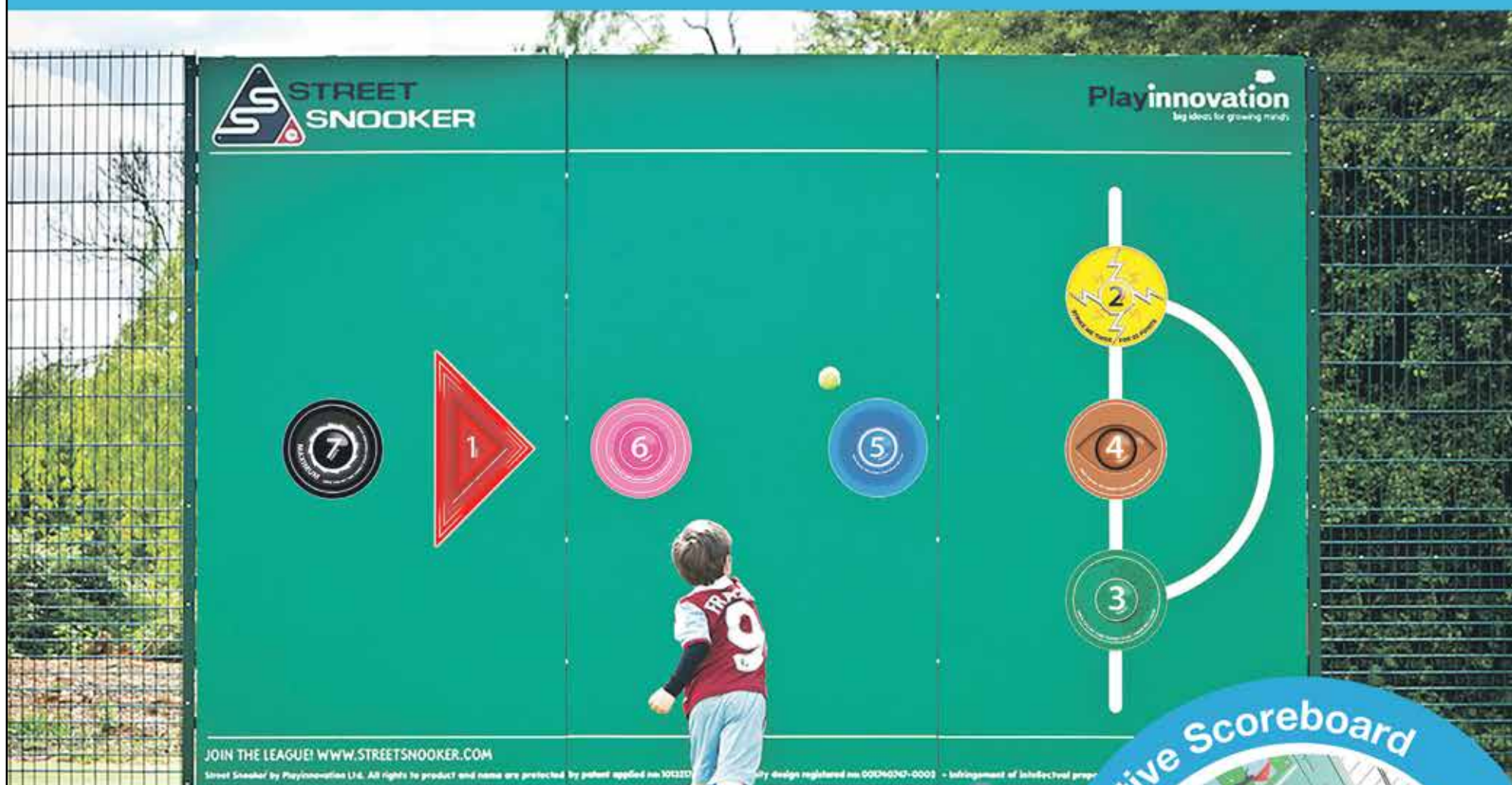
The threat of flooding faced by a community in a Welsh mountain valley is being greatly reduced by a culvert clearance programme carried out by Lanes Group plc.

The drainage specialist has been commissioned by the county borough of Rhondda Cynon Taf to carry out the surface water drain and culvert cleaning work in and around Cwmbach, near Aberdare. Debris washed down the mountainside and into the culverts during periods of heavy rain and snow melt had greatly reduced the capacity of the culverts, increasing the risk of flash flooding. Drainage engineers from the Lanes Cardiff depot have worked closely with the county borough's own asset maintenance teams to remove and dispose of many tonnes of silt, stones and large boulders. Specialist drainage vehicles have been playing a key role in ensuring the culvert cleaning work can be carried out as quickly, safely and sustainably as possible. The three-month programme, coordinated by the county borough, has resulted in the systematic cleaning of drains and culverts ranging from 100mm to 1,200mm in diameter. Lanes has deployed a recycler jet vac tanker as well as a standard jet vac machine to carry out the water jetting and vacuumation work. A recycler unit can filter and reuse its water, allowing it to stay on station for longer without refilling its tank, increasing productivity by up to 68%.



T 0800 525 488
www.lanesfordrains.co.uk

BREAKING THE MOULD OF OUTDOOR GAMING!



$$1 + 6 + 7 + 5 + 1 = 14$$

Innovative target games & ball courts
for your school playground and park.

Interactive Scoreboard



Visit: www.playinnovation.co.uk
Email us today: contact@playinnovation.co.uk



Download the
free app!

