



# SUSTAINABILITY TODAY

Issue 421 August 2020

Tel: 0121 550 7510  
www.tradexnews.co.uk

energy | water | waste | recycling | sustainability on LinkedIn

## LAUDA Technology Ltd



LAUDA continues to provide an expanding range of feature-rich, future proof solutions with energy efficiency and connectivity front of mind, serving a diverse range of industries including automotive, aerospace, chemical, pharmaceutical, biopharmaceutical, food & beverage, brewing, digital printing, laser and beyond.

The new range of water chillers has been designed not only to meet the new Ecodesign directive, but to surpass it through the innovative use of variable speed modules that automatically reduce their duty cycle in line with the cooling demand hence reducing energy consumption and running costs, giving a tangible return on investment for the user.

LAUDA's proven and highly durable process circulator product range provides precise thermoregulation for external applications from -90

to +320 °C with stability up to +/- 0.05 °C dependent upon model. The newly developed, superior cooling technology guarantees maximum process reliability in accordance with the European F-Gas Regulation. With its highly dynamic, precise temperature control, high connectivity and improved pump performance, your research and pilot plants will be sustainably equipped and ready for the future. With up to 12 kW of heating power and 20 kW of cooling power (at 20 °C) and a multitude of heat transfer fluids available, from water/glycol through to silicone oils, the LAUDA range is designed to meet the most stringent of customer needs, whilst providing reliable performance, ensuring the total cost of ownership is minimised.

Laboratory workplaces requiring water baths, shakers, incubators, freezers, water stills, viscometers, tensiometers or contact angle measurement for surface tension applications, are also extremely well served by the refreshed product range offering a diverse range of capabilities.

Contact  
T +44 (0)1780 243118  
info@lauda-technology.co.uk  
www.lauda-technology.co.uk

## Spiral or corrugated tube heat exchangers – which is best for wastewater treatment?

Spiral heat exchangers have become synonymous with the treatment of slurries and wastewater, materials which have a high fouling risk, are viscous, or which contain fibres and solid materials. However, in many situations the performance of a corrugated tube heat exchanger is equal to or better than that of a spiral design. Not only that, but corrugated tube designs provide a number of additional advantages in terms of day-to-day operation and maintenance.

While some of the benefits claimed for SHEs hold true when they are compared to smooth tubular heat exchangers, the benefits diminish when compared to corrugated tubes of the type used by HRS Heat Exchangers, in the DTI Series.



Unlike SHEs, the tubes can easily be removed for inspection, cleaning and maintenance and a variety of flange



The HRS DTI Series of corrugated tube-in-tube heat exchangers is ideal for sludge applications

connections are available. The unit is also made in easy-to-replace sections. Should the heat exchanger suffer internal damage, the failed section can be easily bypassed by moving the interconnecting bends; a replacement can be manufactured and fitted when it is ready. In contrast, if a spiral is damaged, the complete heat exchanger must be removed to a workshop where many layers have to be cut out to access the point of failure. This is then re-welded and all the cut away sections must be re-welded into place. The cost is significant and downtime is many weeks.

In many situations, we believe that a corrugated tube heat exchanger, like the HRS DTI Series, is the best solution for challenging materials such as sludge.

However, in the most extreme cases with a very high fouling risk, it will be necessary to use a scraped-surface heat exchanger such as either the HRS rotating R Series or the patented reciprocating Unicus Series.

In order to select the best solution it is necessary to accurately assess the physical properties of the product or sludge to be treated, as well as the service fluid, inlet and outlet temperatures and the amount of heat regeneration required (if any). When comparing specifications or quotations for different solutions – for example SHEs compared to corrugated tubes – it is important to make sure that you are comparing like-for-like and that the performance specifications are identical. You should also assess whether any gains in efficiency or lower capital cost will be offset by increased fouling or operational costs over the full life of the unit.



T 01923 232335  
www.hrs-heatexchangers.com

renewableos.com

# ROS RENEWABLE OIL SERVICES ONSHORE AND OFFSHORE

ROS are the UK's largest supplier of oil products and oil exchange services to the onshore and offshore wind turbine industry across the UK and Ireland.

We have recently expanded our service offering to cover the Industrial and Marine sectors operating our specialised trucks and equipment to carry out gearbox, hydraulic, glycol coolant and transformer oil exchanges.

Supply of consumable products: oils, grease, filters, cleaning rags, oil absorbent pads, disposable gloves, etc. making us your one stop shop for all your industrial servicing needs.

Renewable Oil Services Ltd Mid Williamshaw Old Glasgow Road  
Stewarton, East Ayrshire KA3 5JR

+44 (0) 1560 485 854  
inbox@renewableos.com

## Working to Raise Industry Standards

- N.S.A.** Represents the interests of companies associated with the survey, operation, maintenance and renovation of sewers, drains and pipelines.
- N.S.A.** Acts as a forum for its members to ensure that technological developments go hand in hand with improved operational efficiency.

**Standards**  
Pro-active in setting and maintaining training standards within the industry. Representation on standards and parliamentary committees and regular consultees on a broad range of Legislative and Regulatory matters.

**Members**  
Our members range from sole proprietors to divisions of public companies providing services such as:

- CCTV Inspections
- Sewer Flow Surveys
- Systems survey and Mapping
- Drain and Sewer Cleaning
- Equipment Manufacture
- Training

For more information visit our website: [www.sewerage.org](http://www.sewerage.org)  
or call Val Gibbens on 020 8330 0123

## Peel L&P

Peel L&P strives towards clean growth as buildings become first in UK to achieve net zero carbon status

At Peel L&P, we are taking action to mitigate climate change and support a shift to clean growth.

11 of our properties are the first in the UK to demonstrate net zero carbon status based on their operational carbon emissions, action taken to reduce those emissions and their renewable energy use. This is verified against the UK Green Building Council's 2019 definition and we will look to increase the number of net zero carbon buildings in our portfolio.

Peel L&P has a long track record of leadership in sustainability as the first developer to achieve the BREEAM communities standard at Media City UK in 2011 and the first major property company to achieve the energy management standard ISO 50001 in 2015.

Our work to reduce carbon emissions is part of a five year sustainability plan which supports The United Nations' Sustainable Development Goals to help create a fair and sustainable planet by 2030.

Peel L&P is also supporting clean growth through low carbon energy projects such as Mersey Heat in Liverpool and Protos, its strategic resource recovery and energy hub in Cheshire.

More at: [www.peellandp.co.uk/responsibility](http://www.peellandp.co.uk/responsibility)

# Safeguard your AD plant from the 5 hidden causes of CHP shutdown

Combined heat and power (CHP) gas engines are one of the most expensive pieces of equipment on an anaerobic digestion (AD) plant. They are also one of the most important, as a CHP engine unable to generate electricity means an immediate loss of income for the operator. Despite this, many AD operators take a hands-off approach to maintaining their CHP; either relying on expensive locked-in service contracts that only cover mechanical issues or waiting for a problem to occur before taking action.



James Thompson, Managing Director of Gen-C

Here, James Thompson, Managing Director of Gen-C, an independent CHP parts and service provider, explains how a live monitoring system can protect your engine from the five most common hidden causes of engine shutdown...

### Knowledge is power

Today's latest CHP engines are finely tuned, sophisticated pieces of kit that operate with precise tolerances. Correctly maintained, they will perform reliably for years to come; but leave them unchecked and you run the risk of underperformance, hard shutdowns and even catastrophic failure.

Operators that can monitor their engine's



The Motortech open access control panel comes with the IGS-LOG as standard

performance in real time, and review and compare data across a range of parameters, will be in the best position to prevent issues from happening, ensuring their CHP operates as intended and continues to generate income for them for years to come.

To identify and correct issues before they start affecting your engine's performance, we recommend that operators install live engine monitoring. The IGS-LOG software, which comes as standard with the Motortech open access control panel, enables owners to understand what constitutes normal operation and spot any downward trends or anomalies.

Giving operators full control over their engine and ensuring the highest levels of performance, it monitors up to 25 parameters, including the

following five common hidden causes of engine shutdown.

### 1. Gas pressure

Potential causes of drops in gas pressure include flaring or a blockage in the gas line or filter. By monitoring the gas pressure and noting any drops, operators can better identify the cause of any unexpected shutdown and take preventative action to protect their CHP.

### 2. Gas quality

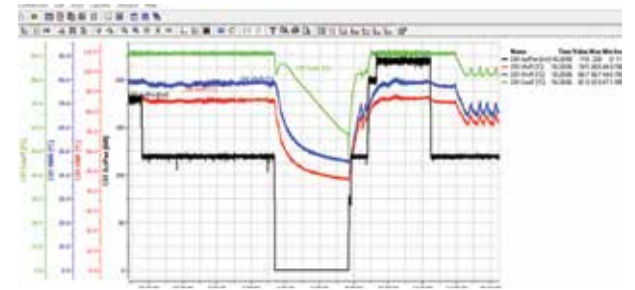
Changes in AD feedstock will affect an engine's performance, particularly if harmful contaminants such as H<sub>2</sub>S are allowed to build up. By monitoring the gas composition, operators can spot any corresponding trends in engine performance and alter their feedstock as necessary before their CHP becomes adversely affected.

### 3. Emissions

The ComAp IGS-LOG provides 24/7 emission analysis, enabling an operator to fine-tune their engine. Operating without this vital piece of information is like a chef not tasting their food. It allows the operator to see if their engine is



AD operators can improve their engine's performance with real-time CHP monitoring



The IGS-LOG live monitoring system tracks up to 25 key engine parameters

running rich or lean and take the necessary steps to address any issues before they present a serious risk.

### 4. Water pressure

Another common cause of a hard engine shutdown is a change in water pressure. Constant analysis of water pressure helps an operator to avoid the peaks and troughs that can result in performance issues and promotes smooth and reliable operation.

### 5. Kilovolts

An operator will often become used to hearing a tiny jump when their engine starts and dismiss it as a quirk of their engine, without realising that this noise is actually the sound of the engine misfiring. Every time this misfire occurs, it sends a shudder throughout the whole cylinder, placing additional stress on every part of the CHP.

Live monitoring will highlight a rise in kilovolts or erratic KV readings, warning the operator of a potential issue with their ignition system or spark plugs.

To find out how live engine monitoring can improve the performance and longevity of your CHP engine, contact [james.thompson@gen-c.co.uk](mailto:james.thompson@gen-c.co.uk).

## Green Build News

# New wild flower products

Two innovative new products have just been released by leading UK wild flower specialists, Wildflower Turf Ltd;



Meadowscape Pro™ and Wildflower Turf® Finisher. After several years of research and product testing the Hampshire-based business has announced the launch of Meadowscape Pro™, an enhanced growing medium used by landscape professionals for effective wild flower establishment which has also been used and approved by The Royal Botanic Gardens, Kew.

Meadowscape Pro™ allows for the creation of dynamic and biodiverse wild flower spaces in a range of settings with minimal ground preparation, saving time and money. Extensively tested and enriched with Hydropor™, this specially developed formula supports good water percolation and retention, stabilising the growing medium for much better seed germination compared to more conventional seeding methods.

Wildflower Turf® Finisher is designed to fill joints, edges and small gaps for Wildflower Turf® projects and will eradicate the need for wastage of the Wildflower Turf® product when laying complex areas. Perfect for use around trees, plants and around areas of defined shapes where cutting the Wildflower Turf® becomes more complicated, Wildflower Turf® Finisher will be supplied in convenient 20kg bags.

T 01256 771222  
[wildflower@wildflowerturf.co.uk](mailto:wildflower@wildflowerturf.co.uk)  
[www.wildflowerturf.co.uk](http://www.wildflowerturf.co.uk)



## Form it. Stack it. Change it. Move it.






### THE UNIQUE BETONBLOCK® SYSTEM

**Way Ahead Of The Competition!**

- A sustainable formsystem
- High quality steel forms
- Extremely accurate thanks to the best production techniques

- The most stable stacking system
- Unique and extensive product range
- Best price-performance ratio
- Production techniques ensure long-term durability



Head Office Holland | T +31 (0)72 503 93 40 | [info@betonblock.com](mailto:info@betonblock.com) | [www.betonblock.com](http://www.betonblock.com) |  

# Bespoke and ready-made protective covers



manufacture and installation, with the ability to produce to almost any size and listen to its clients to create a custom product that meets all their requirements.

Indeed, this ability to solve its clients' problems is what makes Stuart Canvas a true industry leader, working with a number of blue-chip companies from around the UK and exporting to over 25 countries. No job is too big or too small for Stuart Canvas, and the company can also offer a CAD drawing service for its products if the customer's design requires it.



One of the company's notable solutions is its Aggregate Bay Retractable Covers. These provide an innovative waterproof covering for the protection of bulk products stored outside. Stuart Canvas can produce retractable bay covers which can operate independently (single and multiple bays) and use a wall mounted tracking

system to allow the cover to retract for the loading and unloading of products.



These systems also include protection for the front and rear of the bays to prevent water ingress from all sides, offering excellent protection for kiln dried products and reducing the amount of wastage by 30%. These covers are complemented by an expert design, supply and installation service, along with a dedicated R&D team that can solve any unusual covering issues or requirements. What's more, the covers can now be offered with a fully electric system for simple operation.

With the significant changes brought about by the COVID-19 pandemic, Stuart Canvas has been playing its part in helping the country through the crisis. "During the lockdown, we diversified and manufactured thousands of protective gowns for NHS staff and sold over 100,000 items of PPE," said Steven.

"Moreover, going forward, our retractable tunnels can help customers to reduce waste and cover their slow-moving stock. They can also help companies expand



their storage facilities without the cost of moving to new premises during the current uncertain financial future following the pandemic."

**Contact**  
T +44 (0)1925 814525  
sales@stuartcanvas.co.uk  
www.stuartcanvas.co.uk



**STUART CANVAS**  
GROUP

**Sustainability Today is proud to announce that Stuart Canvas has been selected as our Protective Coverings Company of the Month.**

Stuart Canvas is a British textile finisher, specialising in the manufacture and design of ready-made and bespoke covers for a range of different sectors including sports, defence, construction, supply chain, transport, leisure and domestic settings.

"We produce products such as retractable tunnels for storage and waste bays, bespoke machine and heavy plant covers, and pallet and stillage covers for the haulage industries," explained Steven Ball, Marketing Manager.

With 60,000ft<sup>2</sup> purpose-built manufacturing facilities across three sites, Stuart Canvas has continued to grow with the industry, investing in new machines and technology to ensure it can design and manufacture nearly all types of covers. Thanks to its decades of experience, Stuart Canvas can offer complete bespoke

## Solar & Storage Live Review Top 10

### Solar & Storage Live 2019

Solar & Storage Live 2019 took place on 17 – 19 September at the NEC, Birmingham. As the UK's largest renewable energy marketplace, the exhibition hosted over 150 exhibitors from across the world, generating solutions to help power the energy transition.

Celebrating the technologies at the forefront of the transition to a greener, smarter, and more decentralised energy system, Solar & Storage Live 2019 was the UK's most forward-thinking, challenging and exciting renewable energy show. The event brought together the entire

energy value chain, with experts, innovators and disruptors from the solar, EV and storage industries.

At a time when the industry needs to work together to build a smarter, greener energy system, Solar & Storage Live is an essential event to help enable this critical change.

With over 4,000 attendees, over 150 exhibitors, and over 250 speakers, the event is a thriving hub of information, innovation and exciting new technologies.

Following the impact of COVID-19, this year's event has been rescheduled to 2 – 4 December, in order to maintain the value and quality of this industry leading event.

This is our pick of the best exhibitors from the show, listed here in alphabetical order: Pegasus Group and Waxman. Further details can be found below.

**Contact**  
www.terrapinn.com/exhibition/solar-storage-live/index.stm



**Pegasus Group**

DESIGN ENVIRONMENT PLANNING ECONOMICS HERITAGE

Pegasus Group is a leading national development consultancy specialising in planning, design, environment, economics and heritage. We have considerable experience of a variety of energy projects including solar, battery storage, anaerobic digestion, biogas and energy from waste and on and offshore wind.

FOR MORE INFORMATION, PLEASE CONTACT:  
T 0333 0160 777 E enquiries@pegasusgroup.co.uk

PEGASUSGROUP.CO.UK

### Pegasus Group's solar development

The recent announcement by the Government to reopen Pot 1 to onshore wind and solar projects in Round 4 of the Contracts for Difference scheme is very welcome and long overdue. This should be a big boost to the solar industry and help bring more installed capacity to market.

That is not to say that the solar industry has stood idle while the Government has been correcting the rather baffling decisions of the past.

The entrepreneurial nature of many solar developers within the UK has seen many press ahead with projects irrespective of the Government position, relying on their own innovative thinking and confidence in their product to make things work.

Pegasus Group continue to help our solar clients with all aspects of solar development from site finding, through to site acquisition and securing planning permission. Indeed, our



Cirencester and Bristol offices have recently secured further consents respectively for Scurf Dyke Solar Farm, a 50MW scheme in East Riding of Yorkshire and Dorset Solar Farm, a 40MW project near Blandford Forum in Dorset.

Dorset Solar Farm is actually a hybrid scheme combining both solar and battery storage technologies and this is something that Pegasus have particular experience in gaining planning permission for.

**If Pegasus can assist with any of your development activities, please contact Simon Tarr (simon.tarr@pegasusgroup.co.uk) or any one of our fourteen offices across the UK.**

### The Renewable Energy Professionals

Providing renewable energy solutions for both domestic and commercial installs, Waxman Energy is one of the UK's largest distributors of solar PV modules, inverters, mounting solutions and EV chargers. Part of the Waxman Group, which has over 50 years' experience in the distribution industry, Waxman choose to work with only the most trusted brands and together with their on-site sister company, Waxman Battery Storage, they are able to provide a 'full solar package' to their customers.



Setting them apart from their competitors is their technical know-how and customer focused attitude. Building relationships that last, their passionate team offer personalised guidance and support over the phone, email or through face-to-face meetings in their offices or on Zoom.

For Waxman, it is paramount that each and every installer they work with feels confident that they have the knowledge to install each product safely and correctly. Which is why, since 2018, hundreds of installers have chosen to expand their knowledge of solar, battery storage, roof mounting systems and EV charging units in their purpose built training centre. Adapting to the current climate, Waxman now offers virtual product training webinars to ensure their customers are never without the tools & support needed to adapt to the ever-changing solar market without the need to travel to site.

To find out more about Waxman Energy, or to book onto a product training session, please call 01422 37411 or email info@waxmanenergy.co.uk

## Expert business rates advice for the low carbon sector



Chris. "This form of taxation is continuously rising and it's important that business rate payers are well represented by a Chartered Surveyor with an extensive track record in this sector."

Moreover, under the government's new plan to tackle the effects of climate change, the UK aims to cut its greenhouse gas emissions to net zero by 2050. In light of this goal, Chris stated that business rates must not be prohibitive to this sector. Operators, site

developers and owners need now more than ever to be encouraged to continue investing in producing low carbon forms of energy.

For any further information on what Handel Rating Consultants can offer, please get in touch using the details below.

M 07985 813859  
www.handelrating.com



Handel Rating Consultants delivers high quality business rates advice to the low carbon sector. Established in 2015 by Chris Handel, who is an RICS Chartered Surveyor with 25 years' professional experience, Handel Rating Consultants has built an impressive reputation for delivering top quality service, achieving market leading results across national portfolios and individual sites.

Thanks to Chris's expertise, Handel Rating Consultants is renowned for securing substantial operating cost savings for renewable energy developers and operators, including JLEN, Energiekontor, and many Anaerobic Digester operators and developers such as Biogen, Future Biogas, Ixora and Material Change.

It is the only business rates consultancy in the UK that is solely focused on the low carbon sector, helping to lessen the burden that business rates impose on this area. "I undertake surveys and valuations for business rates and negotiate on behalf of the client in order to challenge the methodology of the business rates authorities," explained Chris Handel.



For many site developers, operators and owners of low carbon generators and recycling & waste management, business rates are now a substantial operating expense. This kind of financial burden is a complex process which is difficult to navigate and can even deter a developer from a project altogether. With this in mind, finding an experienced advisor to professionally manage business rates can help deliver substantial refunds and reduced tax bills for many years in the future.

Working with clients involved in solar energy, combined heat and power, wind power, and energy from waste, Handel Rating Consultants offers business rates valuation and negotiates cost management services to provide a proactive strategy. This ensures clients have access to the most competitive business rates available.

The company works closely with clients and advocates on their behalf, to appeal and negotiate reductions in rateable value. "The basis of tax is complicated," said



## Water Management News



**DRAGON DRILLING**  
(Water & Energy) Ltd



## Specialists in Water Boreholes and Ground Source Heating

Dragon Drilling is the largest environmental drilling company in the UK and specialises in water and ground source heating borehole installations.

Their services are ideal for most applications, including rural homes, new build, retro-fit homes, leisure facilities, care homes, caravan parks and farms. A water borehole enables you to become independent of mains water, whilst ground source heating is a sustainable energy which allows your property to have a constant heat whilst receiving payments from the Government's Renewable Heat Incentive scheme.

If you have high water or energy bills why not contact Dragon Drilling today for a free site assessment to see how they can start saving you money!

### WATER BOREHOLES

If you currently use a large volume of water and face costly metered charges a water borehole can save you considerable sums of money. It also offers an excellent alternative if you have poor water quality or an unreliable supply. Sustainable in drought conditions and offering a reliable pressure, water boreholes can deliver safe, clean water direct to your property. Ideal for farms, caravan parks, leisure facilities and rural homes, water boreholes enable you to become independent of mains water.

#### Q&A: Water Boreholes

**How much space do I need?**  
"The actual space required for a water borehole may be as small as a driveway. If you can get a Land Rover with a trailer to the drill location, our drilling rig should be able to gain access."

**Can a water borehole be installed in a town property?**  
"Yes, we have installed water boreholes in many urban locations."

**Do I still have to pay a water company once a water borehole has been installed?**  
"No, once installed your water will be supplied free of charge. You will only be subject to the running cost of the pump. If you are on mains sewage, you are still required to pay for this service."

**What does the borehole look like at the surface?**  
"At the surface, we install an ordinary manhole cover, over which you can safely walk and drive."

**How do you know if there is a sufficient water supply in the ground?**  
"We have an in-house geologist who assesses the underlying geology of the site and provides an anticipated drill depth for your borehole. At an additional cost and if required, the British Geological Survey can carry out a third party assessment. We cannot guarantee the quantity or quality of the water."

**Is ground water safe to drink?**  
"Usually but not always. The water source may contain dissolved minerals that need to be removed. We recommend water quality tests are carried out and, if required, the installation of treatment systems."

**Do I require a licence to install a water borehole?**  
"Anyone is allowed to extract up to 20,000 litres per day without a licence. If you require a greater volume of water, you will need an Abstraction Permit from the Environment Agency. We can assist with all licensing matters."

### GROUND SOURCE HEATING

Extracting energy from the ground to heat a property is a sustainable use of the Earth's natural resources and could reduce your fuel bills. A few metres below the ground, the temperature is constant throughout the year and this energy can be harnessed to heat your home and water.

The benefits of ground source heating systems include:

- On average, 75% free renewable energy
- Government incentives available
- Fixed and stable energy costs
- Lower carbon emissions
- Constant heat 24 hours a day
- Fuels both hot water and heating
- Directly replaces your existing boiler
- Reversible to provide cooler temperatures in summer
- Can add value to property

#### Q&A: Ground Source Heating

**How much space do I need?**  
"The actual space required for a ground source heating borehole may be as small as a driveway. If you can get a Land Rover and trailer to the drill location, our drilling rig should be able to gain access."

**Can I install ground source heating in an old property?**  
"Yes, this is possible."

**How much will I save?**  
"You could save up to 75% of your fuel bill."

**What does the borehole look like at the surface?**  
"Each borehole is covered with a manhole of around 15cm"

**How many boreholes will I need?**  
"This depends on how much heat is naturally lost from your building and the

kilowatt capacity of your system. Generally, the bigger the property, the more boreholes you are likely to require. A typical four bedroom property may need two ground source heating boreholes."

**If I need multiple boreholes, how far apart should they be?**  
"Ideally, ground source heating boreholes ought to be situated a minimum of six metres apart to maximise the efficiency of the heating pump system."

**Do I need to gain permission to install a ground source heat borehole?**  
"Not usually. Permission may be required when drilling into an area containing coal. We can assist with all matters relating to permission and licensing."

For more information about our services, please contact us on 01824 707 777 or admin@dragondrilling.co.uk or visit our website at www.dragondrilling.co.uk

# Reuse before recycle: why you shouldn't be throwing your clothes away

**S**ustainability Today is proud to announce that Pink Elephant Group Ltd has been selected as our Textile Recycling Company of the Month.

Pink Elephant Group specialises in recycled clothing and currently operates textile bank collections and recycling schemes across the country. These textile banks are bright pink in colour, to match the company name and brand. "We chose such a name and such a colour to attract more attention to our work and to the recycling and reuse of textiles," explained Oleksii Kotyk, Director. "We understand that it takes less energy to reuse and recycle material than it does



to produce the same material from scratch. Therefore, our emphasis on what we accept and don't accept are written on our textile banks to promote the reuse of clothing. 90% of what goes in our textile banks is reusable, but 10% of the material still goes to landfill."

This admirable work is becoming ever more pressing, thanks to the rising trend of cheap disposable clothing that leads to thousands of tons of clothes and millions of shoes thrown away in the UK every year. This puts unnecessary pressure on our landfill sites, as most of these materials can be



reused in developing countries, both saving natural resources and providing support to those who need it. Indeed, the company's

main charity partner, A Smile for A Child, receives donations from Pink Elephant Group on a continuous basis. "We are very much a socially conscious company and are participating in such activities to help both the environment and its people," said Oleksii.

But why does this area of recycling need more attention? "Clothes that are worn every day are one of the most complicated materials to recycle," Oleksii explained. "They have so many different blends and qualities, and we are trying to highlight that reuse is the best way to prolong the life of clothing and make the general public aware of the subject. This could then affect what is bought and how it is used, with preferences given to higher quality items. Such a shift in perception and understanding of the complexity of recycling clothes will make a massive difference to the whole textile recycling industry."

Elephant Group use their spaces, but also create an extra financial stream in the process.

In fact, just before the national lockdown began in March, Pink Elephant Group entered into a contract with Renewi PLC. As part of this contract, Pink Elephant Group now provides textile banks and textile collection services to the East London



companies and charities were not able to operate. "Though the demand was high and the number of textile materials we normally receive was doubled, we still managed to do weekly collections and kept the local areas cleaned for the general public to continue to use our textile banks," said Oleksii.

Looking to the future, Pink Elephant Group is aiming to broaden its scope by attaining new contracts for its textile banks throughout the UK, as well as exploring innovative ways to reuse and recycle clothes through working with other stakeholders in the industry. It is also looking forward to taking part in the annual RWM Exhibition, taking place on 3-4 November 2020 at the NEC, Birmingham.



Pink Elephant Group is most definitely at the forefront of this movement, thanks to its fast and highly efficient services. The company's main mission is to promote this change towards 'reuse before recycle', as well as providing support and services to local authorities, charitable and commercial organisations, and individual members of the public. This is achieved through arranging various recycling schemes, which helps to raise the extra cash needed for Pink Elephant Group's clients and partners, as well as helping the environment by diverting unwanted clothing from landfills.

Through the operation of its textile banks, Pink Elephant Group generates monthly payments to site owners in exchange for using their space. This is ideal for local authorities, commercial companies, and charities who could not only make a positive impact on the environment by letting Pink

Waste Authority and to Wakefield Councils. Despite the contract beginning just as the COVID-19 pandemic triggered a national lockdown and major operational difficulties, Pink Elephant Group not only managed to setup the required infrastructure, but also provided a collection service throughout the period without fail.

Unfortunately, the COVID-19 pandemic temporarily stopped Pink Elephant Group's door-to-door collections and physical cash-for-clothes shop in Leicester. The pandemic also meant a temporary ban on importing all used clothing to traditional export markets.

These developments had a tremendous impact on the textile recycling industry, however it did not stop Pink Elephant Group from continuing to provide efficient services to its partners and contractors, especially when its neighbouring textile recycling



Interested in working with Pink Elephant Group? The company is always looking for new locations to host its textile banks. Here's how you can help:

- ▼ The placement of a textile bank at your premises, to accept reusable items at no extra cost, that generates monthly rental income
- ▼ A charitable fundraising event, which generates donated goods to be sold to Pink Elephant Group
- ▼ Collecting items locally at a work place, public or private organisation to then sell to Pink Elephant Group

For more information, get in touch using the details below or head to the website.

**Contact**  
[info@pinkelephantgroup.co.uk](mailto:info@pinkelephantgroup.co.uk)  
[www.pinkelephantgroup.co.uk](http://www.pinkelephantgroup.co.uk)

# Worldwide leader in recycling and waste processing equipment

**B**ollegraaf Recycling Solutions is a worldwide leader in recycling and waste processing equipment, with expertise in complete state-of-the-art recycling installations. Established in 1961, Bollegraaf began developing its technology with sustainability in mind after its vertical balers became renowned across the world for their high quality. The range quickly grew from vertical, via semi-automatic,



to the company's current fully automatic baler with a pre-press flap. The concept quickly took hold, leading to Bollegraaf growing from a small Dutch business into a multinational company.

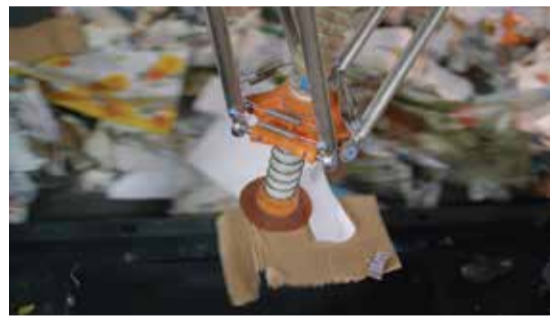
"We design and build high quality recycling solutions for any kind of waste," explained Leendert Rijnveld, Marketing Manager. "We work closely with our customers to design a solution to best suit their needs, so everything is made bespoke for each individual company. We're a well-known recycling partner and have a proven track record across the world for delivering high quality solutions. We always receive great feedback from our customers, who pass on their recommendations to others, so we have a loyal customer base and see a lot of organic growth thanks to this."



Since its inception nearly 60 years ago, Bollegraaf has expanded its product range significantly, and it now includes complete sorting installations and recycling products that are developed by the company's in-house team of designers and engineers. These leading solutions are ideal for the processing of wastepaper, plastics and a vast

range of commercial & industrial and domestic waste. In addition to this, Bollegraaf supplies single products and components, including conveyor belts, sorting belts, magnetic and pneumatic sorting systems, drums and screens for sorting installations.

All of Bollegraaf's equipment is created with the goal to optimise economic value with the lowest possible costs per tonne, helping to ensure permanently low operating costs for a fast return on investment in the long-term. Indeed, recycling is all about recovering value from resource recovery, and Bollegraaf believes there is no such thing as waste, only resources with potential value. This inspiration is what drives the company's operations, helping to add value to the recycling industry and contribute to saving the world's limited resources.



"Recently, we've seen a big increase in the amount of plastic that needs to be recycled," Leendert said. "People are going for more robotic techniques in regards to this, which Bollegraaf can supply, and we are also seeing increasing interest from companies in Africa who are looking for innovative recycling solutions." Bollegraaf's reliable and innovative equipment removes plastics from waste, minimising the amount going to landfill. It can also work with existing combined waste streams and in specialist plastic-only sorting installations.

If you would like to find out more information on everything Bollegraaf has to offer, head to the website or get in touch using the contact details below.

**T +31 (0)596 65 43 33**  
**info@bollegraaf.com**  
**www.bollegraaf.com**



## BOLLEGRAAF RECYCLING SOLUTIONS



### Leading Edge Innovative Sorting

Our range of products has expanded enormously over the years and now comprises complete sorting installations and recycling products that were developed by our in-house team of designers and engineers. These solutions are perfect for processing wastepaper, plastics and a wide range of commercial & industrial and domestic types of waste.

Bollegraaf also supplies single products and components such as conveyor belts, sorting belts, magnetic and pneumatic sorting systems, drums and screens for sorting installations.

**Bollegraaf UK Ltd.**  
 Kimberley Business Park  
 Kimberley Way, Rugeley  
 WS15 1RE, United Kingdom

**Tel: +44 (0)1889 575715**  
**info@bollegraaf.com**

## From trash to treasure – The ANDRITZ Solutions



shredding, fine granulation and dismantling. ADuro shredders are capable to process any waste stream, like e-scrap, organics, domestic, commercial and industrial waste, cables, used tires, wood, or rejects from pulp and paper mills.

ANDRITZ supplies state of the art technologies for shredding, separating, drying and pelleting of waste. The outcome is high value secondary raw materials, such as metals and plastics, and high-calorific alternative fuels.

The ADuro product line comprises innovative recycling shredders for primary and secondary

Where drying is required to decrease the moisture of the material, ANDRITZ dryers are up to the challenge! Different type of dryers are available, such as belt and drum dryers, for the production, among others, of alternative fuels from wood, biomass, agricultural products, municipal and other waste.

The ANDRITZ pelleting

solution transforms recovered waste fractions into valuable materials. Pelleting can add significant value to your recycled products. For waste pelleting, the Paladin Pellet Mill Series ensures high output quality and efficient control of the pelleting process.

ANDRITZ engineered solutions are based on many years of experience from numerous, worldwide installations. We pair our equipment with advanced automation solutions to ensure full process traceability and high performance!

**Contact**  
<http://andritz.com/ft>



### DO NOT WASTE YOUR BUSINESS OPPORTUNITIES

Waste by-products can be highly valuable! A wide variety of materials that are considered waste can be transformed, in most cases, into marketable recycled goods. Among many other production processes, pelleting can further increase the value of these products. Find out how our vast expertise and patented waste processing technologies can fuel the future of your business at [andritz.com/ft](http://andritz.com/ft).

[andritz.com/ft](http://andritz.com/ft)



## Engineered for a Cleaner Environment

Total solutions for separation of airborne dusts and fume control. Dry sorption technology for the removal of acid gases such as SO<sub>2</sub> and HCl, dioxins and heavy metals. Vast experience within Waste to Energy Plants, Biomass Installations, Gasification Systems and Clinical Waste Incineration.



### Lührfilter Ltd.

Air Pollution Control Technology

Unit 1 Crompton Court | Burntwood Business Park | Attwood Road  
Burntwood | Staffordshire | WS7 3GG  
Tel: 0121 353 0176 | Mail: info@luhrfiltergb.com | www.luhrfiltergb.com

## Out the box

connect, simply configure and go



**VtoCloud turns big data to smart data.**

Smart vehicle data loggers process data instantly and locate the actionable points – the 'smart data'. VtoCloud will push the smart data to the Cloud for instant reports and alerts while simultaneously storing the raw data directly onto the internal memory storage.



Call 01767 262922 or 01525 842504  
sales@influxtechnology.com  
www.influxtechnology.com

## Advanced range weather sensors

OTT Hydromet has launched a suite of weather monitoring sensors that are suitable for the construction and building management sectors. "Our latest Luft sensors, the WS Series, deliver professional-grade weather data with instruments that are extremely compact, rugged and reliable" says OTT managing director Nigel Grimsley. "In the past, customers would have had to purchase multiple sensors to monitor outdoor conditions effectively, but this can now be achieved with substantially less costly devices: many of which would fit in the palm of your hand"



Weather monitors are routinely employed at construction sites to check that conditions are suitable for work such as pouring concrete or crane operation, but with facility managers looking for more sustainable solutions, Grimsley believes the big market is now building management.

OTT Hydromet is a specialist manufacturer of smart weather instruments for environmental monitoring and building automation purpose. With no moving parts, OTT's comprehensive range of compact, low-energy multi-parameter sensors offer long-term reliability for almost any weather parameter with easy integration into building control and HVAC systems.

The WS range offers the ability to select from parameters including temperature, relative humidity, air pressure, wind velocity/direction and precipitation.

www.otthydromet.com

## Classifieds

### Odour Control Systems

We specialise in low operational cost, small footprint systems for:

- Odour abatement
- VOC removal
- Biogas desulphurisation

+44 (0)1732 700011  
sales@csogroup.co.uk  
www.csogroup.co.uk

### Sensor Technology

"Our Independence is Your Strength"

sensors@alphasense.com  
www.alphasense.com

THE SENSOR TECHNOLOGY COMPANY

### Water & Waste Water Solutions

### WATER & WASTE WATER SOLUTIONS

- Flange, Bolt & Gasket Sets
- Ductile Iron Flanged Tube & Fittings
- Couplings, Flange Adaptors & Repair Clamps
- Valves • Mechanical & Electrofusion Fittings
- MDPE Tube • Malleable Iron Fittings • Steel Pipe
- PVC Delivery Hose & Fittings • Bauer Couplings

Contact our technical experts for more information

Whieldon Road, Stoke-on-Trent, ST4 4JE  
Tel: 01782 744333 Fax: 01782 744577  
Email: sales@fwb.co.uk www.fwb.co.uk

### Waterless Wheel Cleaning

The DriveOn V-Tech Dry Wheel Cleaning System from Ecogreen Plant Hire Ltd

0800 1303437  
www.ecogreenplanthire.co.uk  
info@ecogreenplanthire.co.uk

### Water Boreholes

**SPECIALISTS IN WATER BOREHOLES AND GROUND SOURCE HEATING**

**DRAGON DRILLING**  
(Water & Energy) LTD

**WATER BOREHOLES - NO MORE WATER BILLS!**  
GROUND SOURCE HEATING ...  
LOWER FUEL BILLS ON HOT WATER AND HEATING

### Transfer Systems

**Process Combustion** COMBUSTION & HEAT TRANSFER SYSTEMS

- Waste to Energy Systems
- Thermal Oxidisers
- Control Systems
- Skid Systems – Pumps, Valves, Pipework

+44 (0)1423 879944  
mail@process-combustion.co.uk  
www.process-combustion.com

### Energy Saving Solutions

Operational solve complex production problems, helping you to save energy, control costs and reduce your impact on the environment.

- Manufacturing Optimisation • Heat Recovery
- Energy Reduction • Environmental Impact Solutions
- Odour and VOC Abatement
- Service and Maintenance Contracts

**OPERATIONAL**  
engineered around you

Website: [www.operationalgroup.com](http://www.operationalgroup.com)  
Email: [uk@operational.net](mailto:uk@operational.net)  
Tel: 01928 579473

### Water Management

Environmental Construction Solutions Limited

**Specialists in Surface & Waste Water Management**  
Advice - Design - Manufacture - Supply - Installation  
Commission - Service - Repair

www.ecs-sales.co.uk | 03456 123332

- Water Boreholes
- Earn cash via RHI payments with a Ground Source Heating System
- All Existing Boreholes Maintenance and Servicing
- Water Treatments

Visit our on-line shop

Dragon Drilling also services existing Water Boreholes and doesn't charge for feasibility studies and estimates

**WE WILL BEAT ANY LIKE FOR LIKE WRITTEN QUOTATION\***  
\* SEE WEBSITE FOR TERMS

For more information about our services, please call today 01824 707 777 or visit our website on: [www.dragondrilling.co.uk](http://www.dragondrilling.co.uk)

### Electronic Repair

Leading equipment suppliers for air quality monitoring applications

- Ambient Air
- Industrial Processes
- Scientific and Research

**ET enviro**  
technology services  
www.et.co.uk  
01453 733200 info@et.co.uk

World Leading Environmental Monitoring Systems

### Finance

**Cash neutral asset finance for your energy needs**

For over 30 years AFM Solutions has been offering long and medium term finance for all your sustainable energy needs.

- LED Lighting & Controls
- Solar Photovoltaic
- Solar Thermal
- Voltage Optimisation
- Biomass Boilers
- Wind Turbines (small)
- Heat Pumps
- Building Management Systems

Call or email Mike Baker on 01268 572587  
mbaker@afmgroup-solutions.co.uk  
www.afmgroup-solutions.co.uk

# Traffic control made simple

**T**radex News is proud to announce that Dofygate has received our Barrier Solutions Company of the Year award.

Dofygate offers a range of innovative solar powered gates which are revolutionising farming and industry operations across the country. Established in July 2011 by Jim Alston, Dofygate's Wheel-e-Gate, Inst-e-Gate and Beast-e-Gate require no external power source, using a solar panel and battery incorporated into each unit for year-round use. This means there is no need to lay cables or provide a wiring point, and the gate opens in just 3.5 seconds and then closes automatically, so there is no hold up for authorised users. Furthermore, the unique design means a clutch can be incorporated that allows the gate to swing away from an impact, saving the arm.

"We offer a unique product designed and built by us in Norfolk, from parts made to our design manufactured by UK-based machinists," said



Jim. "Originally the gate was developed to enable easy access into and out of animal enclosures. The problem is entering and leaving on your own, in a vehicle, and not letting the animals escape. This means it is necessary to get in and out of the vehicle cab four times just to straw out a yard or feed a group in a field. The parameters set out to make this work were then found to match what other industries needed to control traffic.

"Before the COVID-19 pandemic, we were just starting to see increasing uptake of the barriers for safety and biosecurity in road projects and agriculture," explained Jim. "Although the pandemic stalled things for a few months, we've now started working with companies dealing with road projects and traffic control in and around work areas. Our 3m single unit gates are proving to be a very cost-effective solution here.

"We've also been working with a company that does automatic



washers for vehicles. They had an issue whereby the vehicles were driving through the mechanism too quickly, and by the time the cleaning equipment got to pressure, the vehicle had already driven through. So, our gates were implemented to delay the vehicle by three seconds, giving the washer enough time to turn on before the gate opens automatically and lets the vehicle through."

Certainly, Dofygate's solar powered barriers are incredibly versatile, and can be installed at



whatever height the situation calls for. "If you're controlling an HGV, for example, putting the barrier one metre from the ground won't be very helpful, as the driver won't be able to see it. Our barriers can be put at any height to suit the driver, helping to keep the work site safe with efficient traffic control."

As well as these advantages offered by the Inst-e-Gate, Dofygate also offers the Wheel-e-Gate, a self-contained mobile barrier. This allows the gate to go from being in the van to a working barrier in just three and a half minutes – all you need to do is wheel it into place and turn it on. It also means it can be easily relocated when needed or transported in any vehicle.



If you would like to find out more information on Dofygate's innovative barrier solutions, head to the website or get in touch using the contact details below.

**Contact**  
T 01263 493102  
sales@dofygate.co.uk  
www.dofygate.co.uk



## Food & Drink Products & Services News

# Free-From doesn't have to be Free-From taste with Leighton Brown

**S**tarting from humble beginnings in 2013, Leighton Brown was a vision created by three friends working in a restaurant in an East London Pub. Dreaming of creating the most flavoursome free-from vegetable crisps available on the market, the trio founded Leighton Brown as a platform to sell the delicious crisps to the world.

Moving into 2019 and the company has grown and developed significantly with notable new additions to its team; in November 2018 the company welcomed Steve Marsh as CEO who has revolutionised the company, bringing the products into bigger markets.

"When I started, my aim was to take Leighton Brown to the next level. When the three founders started out with their idea they were really ahead of their time creating great tasting vegetable crisps which were gluten free, vegetarian and packed with flavour. The Beetroot, Horseradish and Dill crisps are also Vegan friendly." Steve continued, "Originally the company began supplying pubs and restaurants and now we have expanded our market, supplying a range of retailers including farm shops, delis, food halls and coffee shops."

In terms of the range of crisps, Leighton Brown maintains a selection of three award winning products. Uniquely paired and bursting with flavour, Leighton Brown's crisp range includes: Parsnip and Manuka Honey, Sweet Potato, Cheese and Jalapeño and Beetroot, Horseradish and Dill.

"We have been recognised for our products, winning awards such as a great taste award for our Sweet Potato, Cheese and Jalapeño crisps and we were recognised by Lux Life



Magazine, receiving their Best Gourmet Crisp Brand of the Year for the South East of England 2019."

Aside from the crisps' unrivalled selection of flavours, one of the most noteworthy properties of Leighton Brown's crisps is that all of the ingredients used are natural, non-GMO and contain zero preservatives.

Highly renowned for its distinctive recipes, Leighton Brown's crisps have been recognised for their delicious taste and healthy ingredients which is leading them to become a well-sourced product for free-from snacks.

Speaking about an event that the company recently attended, Steve told us that, "We actually had a visitor at the Food Matters Live event who approached us and said, 'at last I'm tasting a free-from product which isn't free-from taste!', he expressed to us how many other free-from products are tasteless and textured almost like cardboard and that he was so happy to find an alternative that was packed with flavour and with a great texture too."

Leighton Brown is constantly striving to be at the forefront of free-from snacks and pursue new ways to expand its niche market. Speaking once more with CEO Steve Marsh about the future plans for the company, he said that, "We're pushing ahead; we want to expand our market presence and move into bigger outlets. Ideally we plan to get our products into supermarkets. We are also listing with Epicurium, providing national access to 1,700 independent outlets, major forecourt groups and vending companies."

**Contact**  
T 0208 468 1012  
www.leightonbrown.co.uk

